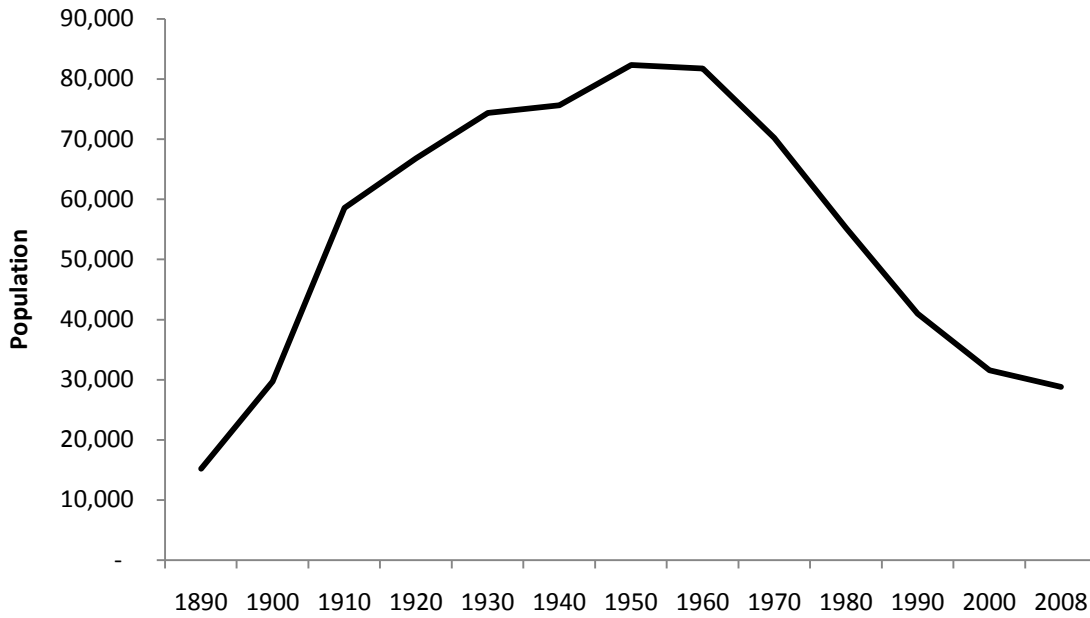


Summary Demographics: East St. Louis, Illinois

Table 1: East St. Louis population peaks in 1950, declines



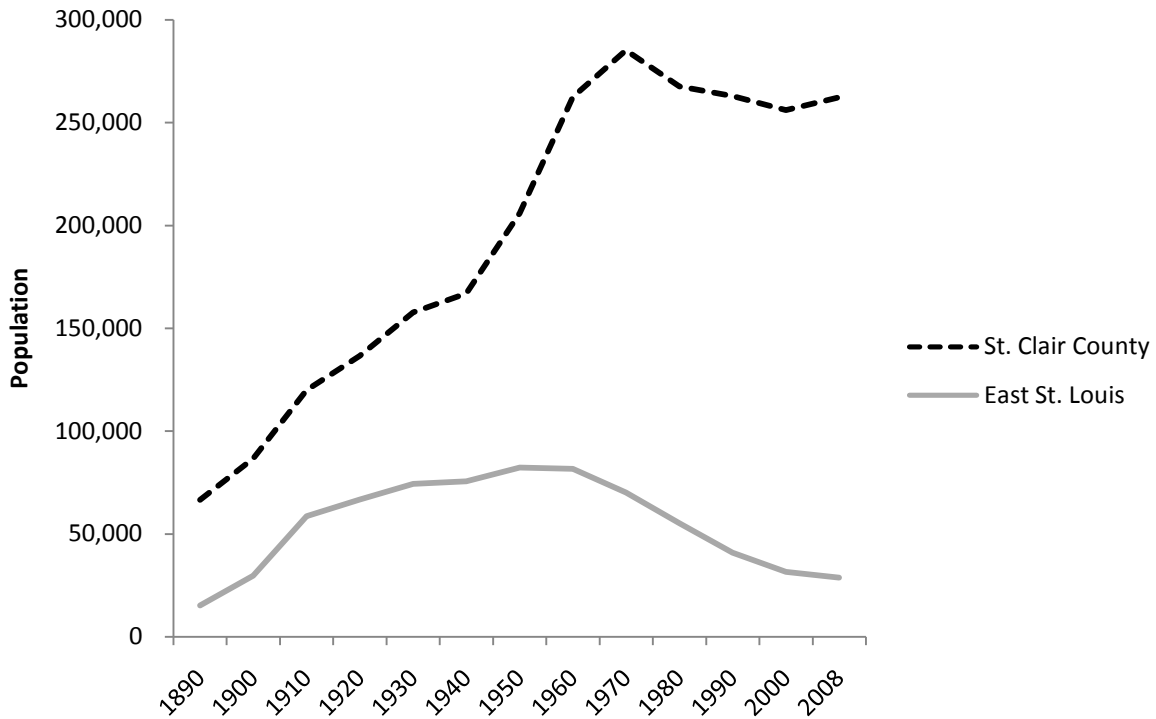
Source: US Census, Historic Population Trends

Table 2: East St. Louis actual population numbers

East St. Louis	
Year	Population
1890	15,169
1900	29,655
1910	58,547
1920	66,767
1930	74,347
1940	75,609
1950	82,295
1960	81,712
1970	70,169
1980	55,200
1990	40,944
2000	31,542
2008	28,773

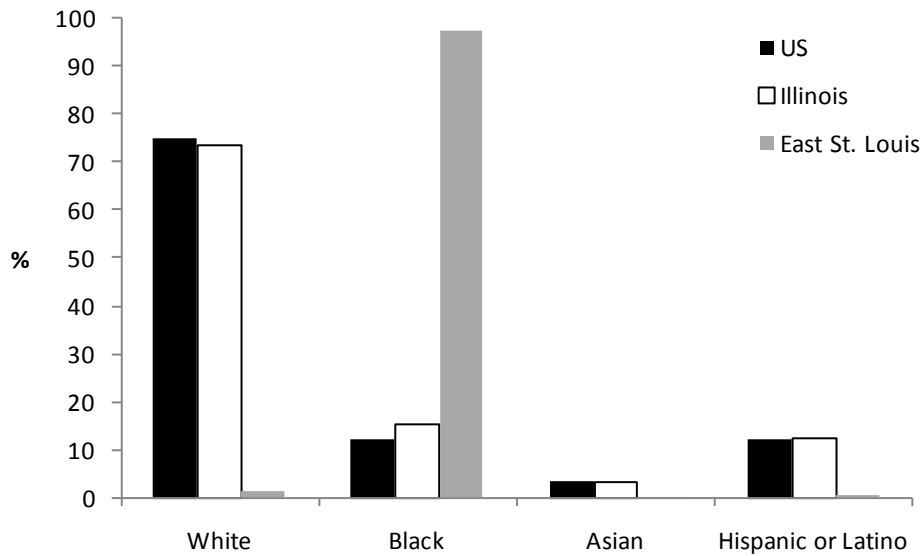
Source: US Census, Historic Population Trends

Table 3: East St. Louis and St. Clair County population change



Source: US Census, Historic Population Trends

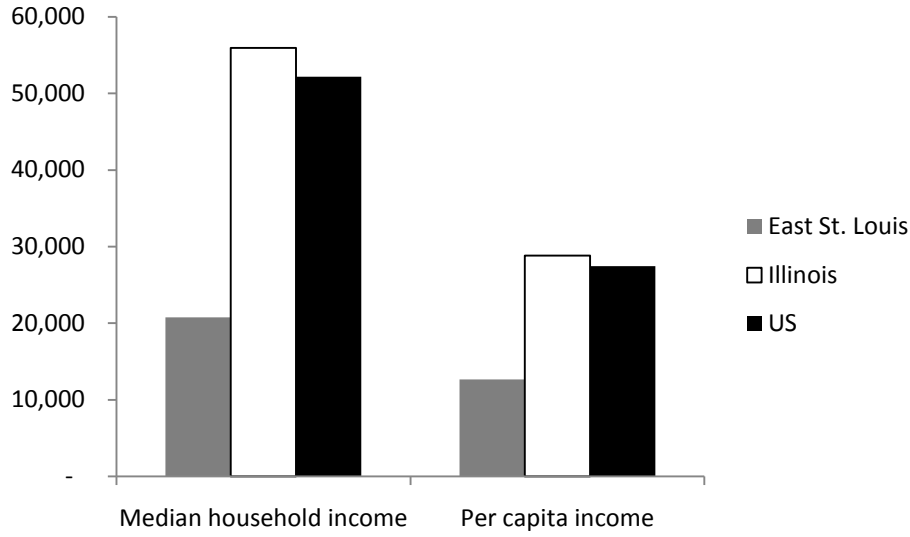
Table 4: Race and Ethnicity



Source: 2000 Census, Summary File 1.

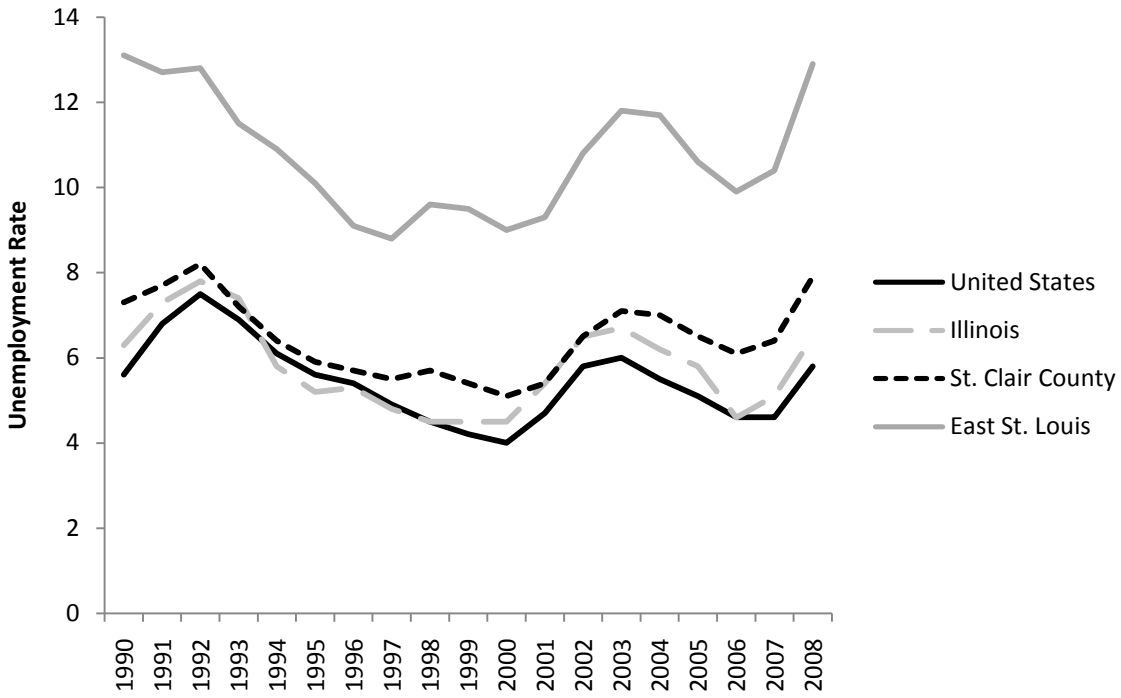
Note: Some race categories have been excluded, hence totals do not sum to 100 percent.

Table 5: Median household income and per capita income



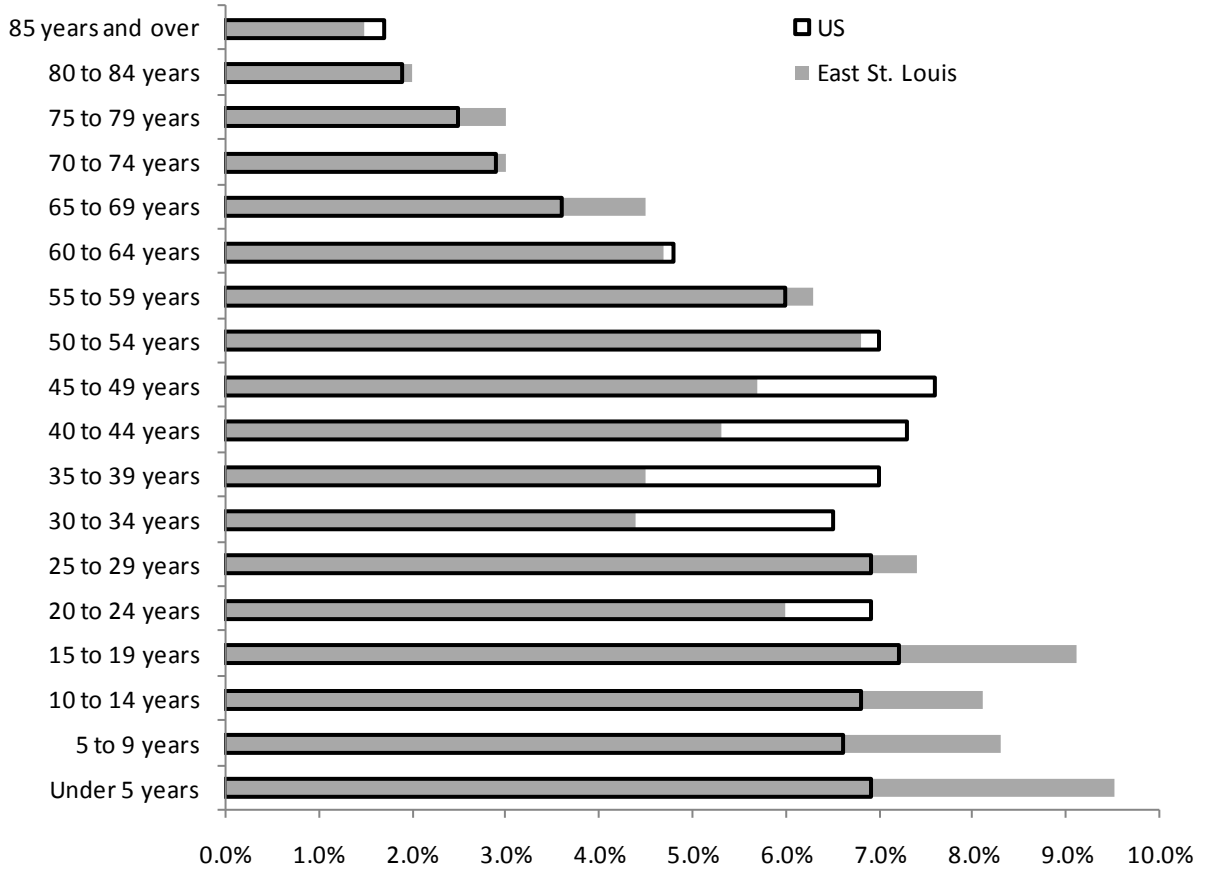
Source 2006-2008 US Census American Community Survey estimates.

Table 6: Unemployment rates



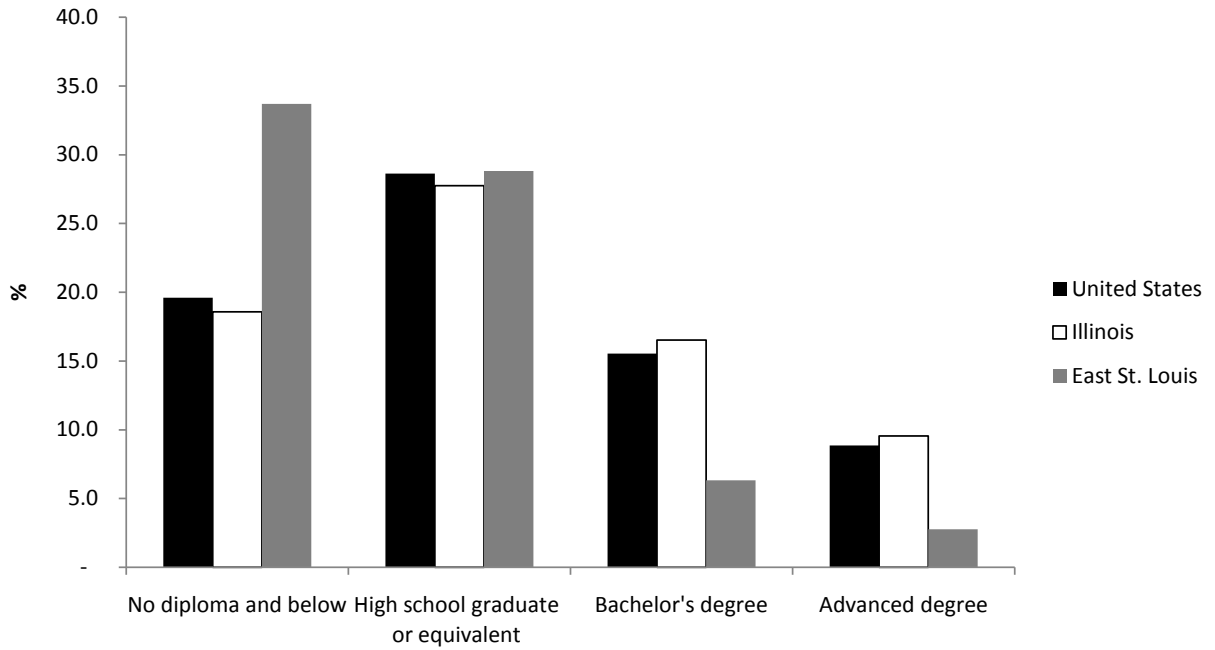
Source: Bureau of Labor Statistics, Local Area Unemployment Statistics, not seasonally adjusted.

Table 7: Population pyramid



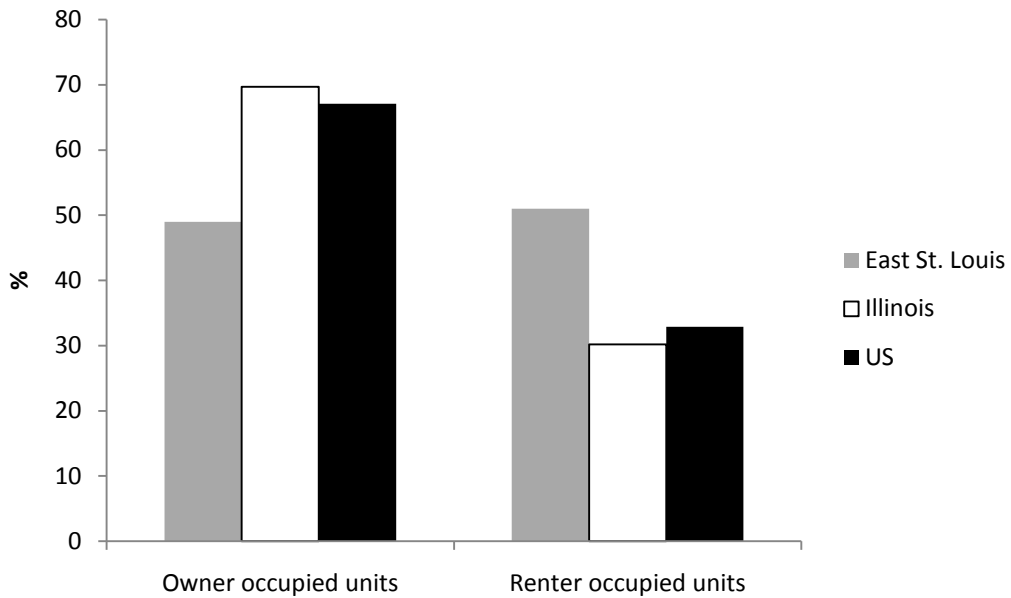
Source: American Community Survey, estimates 2006-2008

Table 8: East St. Louis educational attainment



Source: US Census 2000, Summary File 3, educational attainment for individuals 25 years and over.

Table 9: East St. Louis has comparatively high renter occupancy rates



Source: 2006-2008 US Census American Community Survey estimates.