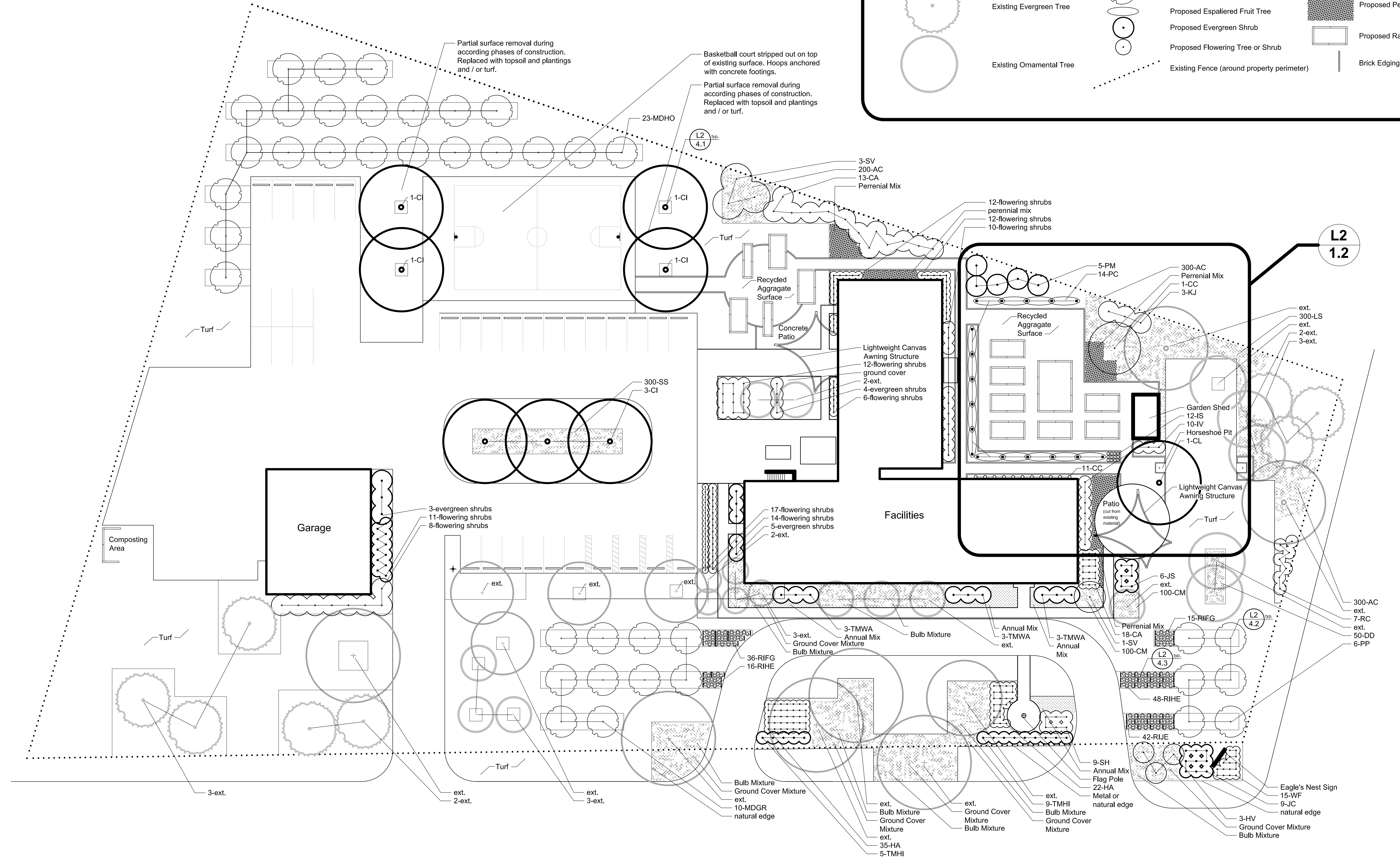


LEGEND:

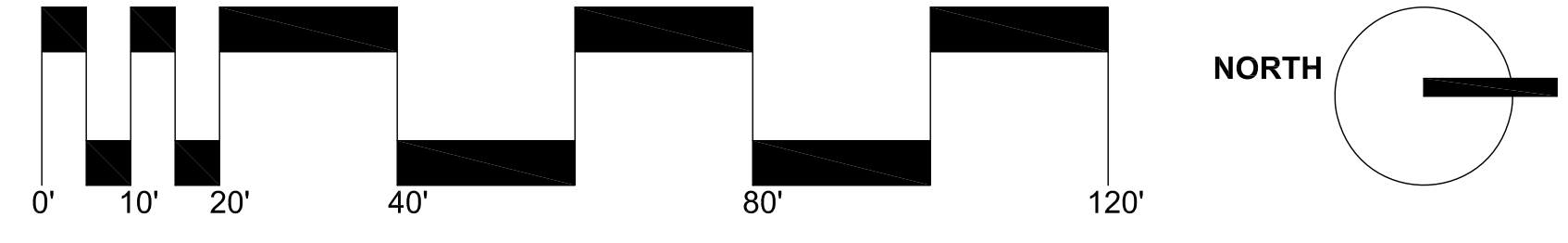
- Existing Shade Tree
- Proposed Shade Tree
- Existing Evergreen Tree
- Proposed Fruit Tree
- Existing Ornamental Tree
- Proposed Espaliered Fruit Tree
- Proposed Evergreen Shrub
- Proposed Flowering Tree or Shrub
- Existing Fence (around property perimeter)
- Proposed Groundcover Mix
- Proposed Annual Mix
- Proposed Perennial Mix
- Proposed Raised Vegetable Bed
- Brick Edging



Issued No.	Date	Description
1	12.12.2008	Final Plans

**EAGLE'S NEST
LANDSCAPE
LAYOUT PLAN**

SHEET L-1



Plant List:

Use	Quantity	Code	Name <i>Scientific Name</i>	Common Name	Plant Size	Notes
Canopy Trees	7	CI	<i>Carya illinoensis</i>	Pecan	1.5"	
	7	CL	<i>Celtis brevigata</i>	Sugar Hackberry	1.5"	
Ornamental Trees	10	CC	<i>Cornus canadensis</i>	Redbud, Eastern	1.5"	
Fruit Trees	23	MDGR	<i>Malus x domestica</i> 'Greensleeves'	Apple, 'Greensleeves' Dwarf	3-4' Bare Root	Other suitable varieties can be planted in place
	14	MDHO	<i>Malus x domestica</i> 'Honeycrisp'	Apple, 'Honeycrisp', Dwarf	3-4' Bare Root	Other suitable varieties can be planted in place
	24	PC	<i>Pyrus communis Dwarf Bartlett Var.</i>	Pear, Dwarf Bartlett	2-3' Bare Root	Other suitable varieties can be planted in place
Shrubs	13	CA	<i>Corylus americana</i>	American Filbert	3 Gal	
Deciduous	18	CA	<i>Clethra alnifolia</i> 'Ruby Spice'	Clethra, 'Ruby Spice'	3 Gal	
	57	HA	<i>Hydrangea arborescens</i>	Hydrangea, Smooth	3 Gal	
	3	HV	<i>Hammamelis vernalis</i>	Witchhazel, Vernal	3 Gal	
	10	IV	<i>Ilex virginica</i> 'Henry's Garnet'	Virginia Sweetspire 'Henry's Garnet'	3 Gal	
	3	KJ	<i>Kerria japonica</i>	Kerria, Japanese	3 Gal	
	7	RC	<i>Rhus copallina</i> var. <i>latifolia</i>	Sumac, Prairie Flame	3 Gal	
	51	RIFG	<i>Rubus idaeus</i> 'Fall Gold'	Raspberry, 'Fall Gold'	1' Cane	Requires soil amendments see details
	64	RHE	<i>Rubus idaeus</i> 'Heritage'	Raspberry, 'Heritage'	1' Cane	Requires soil amendments see details
	42	RUJE	<i>Rubus idaeus</i> 'Jewel'	Raspberry, 'Jewel'	1' Cane	Requires soil amendments see details
	9	SH	<i>Spiraea x 'Van Houttei'</i>	Spiraea, 'Van Houttei'	3 Gal	
	1	SV	<i>Syringa vulgaris</i>	Lilac, Common	3 Gal	
	15	WF	<i>Wegelia florida</i> 'Carnaval'	Wegelia, 'Carnaval'	3 Gal	
Shrubs	9	JC	<i>Juniperus chinensis</i> 'Sangrea'	Juniper, Blue Star Single Seed	3 Gal	
Coniferous	6	JS	<i>Juniperus squamata</i> 'Blue Star'	Juniper, Blue Star Single Seed	3 Gal	
	5	PM	<i>Pinus mugo</i> var. 'Pumilio'	Pine, 'Pumilio' Mugo	3 Gal	
	14	TMHI	<i>Taxus x media</i> 'Hicksii'	Yew, Hicks' Angliolap	3 Gal	
	9	TMWA	<i>Taxus x media</i> 'Wardii'	Yew, Ward's Angliolap	3 Gal	
Ground Cover / Flora	800	AC	<i>Asarum canadense</i>	Ginger, Canadian Wild	2" Plug	
	22	AP	<i>Asiibea chinensis</i> 'Purple Haze'	Astilbe, 'Purple Haze'	1 Gal	
	26	AN	<i>Athyrium niponicum</i> 'Picatum'	Fern, Japanese Painted	1 Gal	
	11	CC	<i>Clematis</i> 'Guernsey Cream'	Clematis, 'Guernsey Cream'	1 Gal	
	13	CG	<i>Carex glauca</i>	Sedge, Blue	1 Gal	
	200	CM	<i>Convolvulus majalis</i>	Lily of the Valley	2" Plug	
	50	DD	<i>Dianthus deltoideus</i> 'Brilliant'	Dianthus 'Brilliant'	1 Gal	
	7	HF	<i>Hosta 'Frances Williams'</i>	Hosta, 'Frances Williams'	1 Gal	
	35	HP	<i>Heuchera</i> 'Purple Palace'	Heuchera, 'Purple Palace'	1 Gal	
	12	IS	<i>Iris sibirica</i> 'Caesar's Brother'	Iris, Siberian 'Caesar's Brother'	1 Gal	
	300	LS	<i>Linopae, spicata</i>	Little Bluestem	2" Plug	
	300	SS	<i>Schizachyrium scoparium</i>	Spiridewort, 'Concord Grape'	1 Gal	
	35	TO	<i>Todescoia alensis</i> 'Concord Grape'	Austrian Speedwell, 'Crater Lake'	1 Gal	
	25	VA	<i>Veronica austriaca</i> 'Crater Lake Blue'	Flowering Shrubs (Estimate)	3 Gal	
Non Specified	102			Flowering Shrubs (Estimate)	3 Gal	
	12			Evergreen Shrubs (Estimate)	3 Gal	
	120			Perennial Mix (Estimate)	1 Gal	
	1000			Groundcover Mix (Estimate)	2" Plug	
	1500			Daffodil Mixture (Estimate)	Bulb	Interplanted with Bulb Mix
	500			Tulip Mixture (Estimate)	Bulb	Interplanted with Groundcover Mix

VEGETABLE GARDEN NOTES:

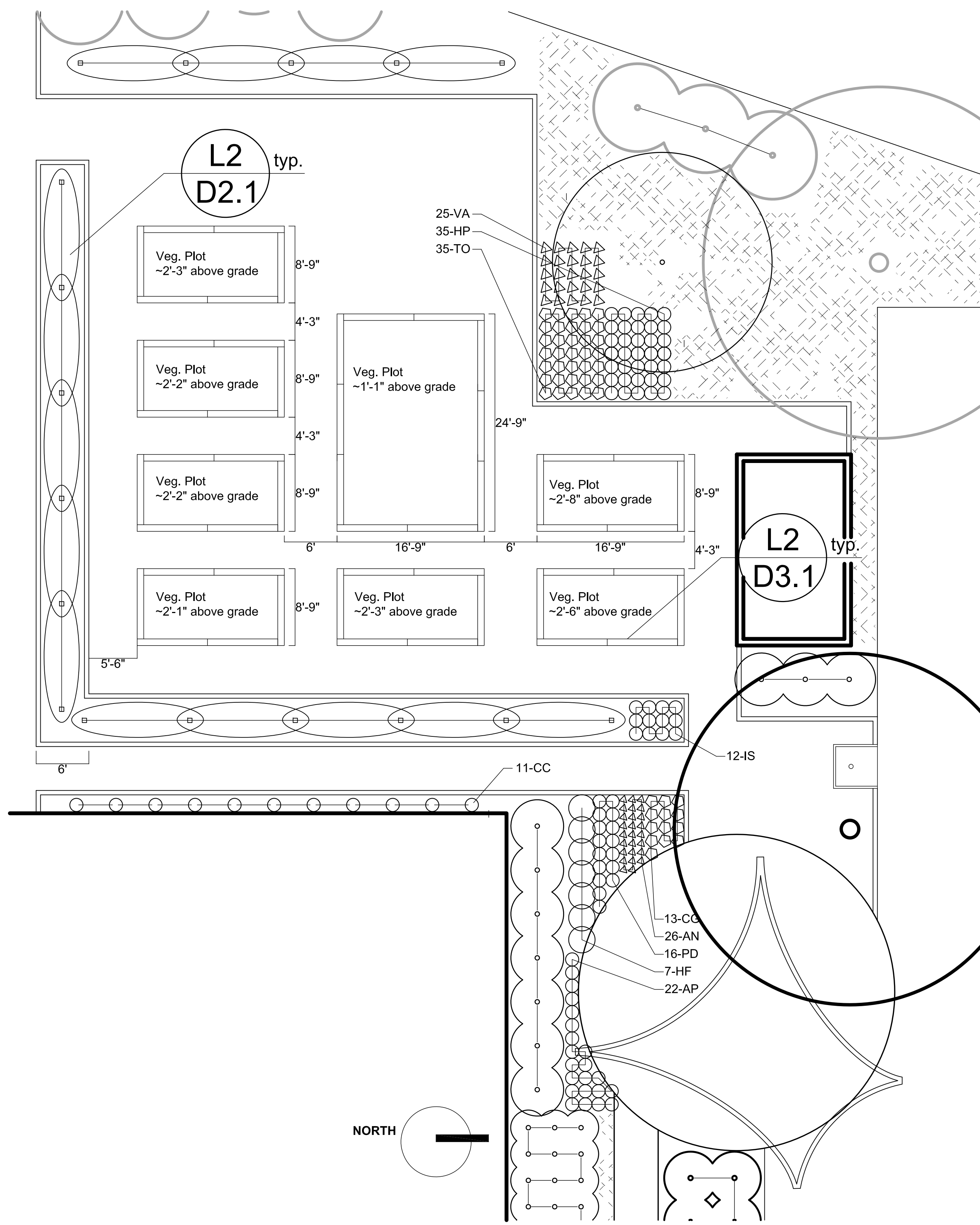
- Plants to be cultivated in raised garden beds include (but not limited to):
- Vegetables etc.- Asparagus, Beans, Broccoli, Cabbage, Carrots, Cauliflower, Collards, Cucumbers, Egg Plant, Endive, Garlic, Green Peppers, Hot Peppers, Kale, Leeks, Lettuce, Melons, Onions, Peas, Potatoes, Pumpkins, Radishes, Scallions, Shallots, Tomatoes, Turnips, Zucchini
- Herbs - Basil, Chives, Mint, Oregano, Parsley, Thyme
- During construction excavated top soil to be used in constructing raised garden beds.
- Compost should be blended with top soil during time of construction.

GENERAL PLANTING NOTES:

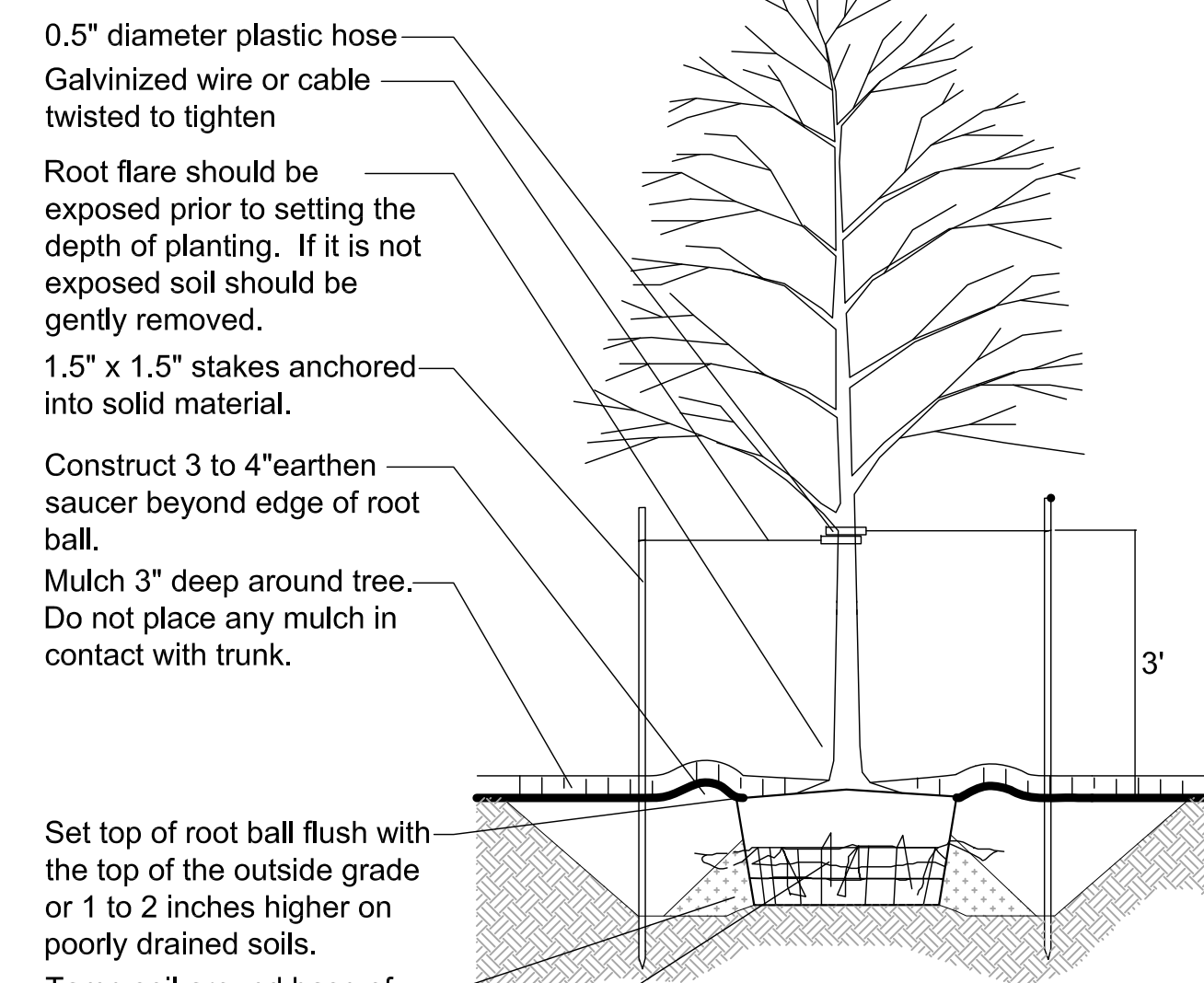
- All shrub, tree, and perennial plantings should comply with American Nurseryman's Association planting standards. Consult them as a resource if information is unclear.
- Plants to be handled by rootball, container, or stem only in the case of bare root material.
- Mulch used for plantings should be applied at a 3" layer after planting. The preferred material after planting should be clean hardwood bark mulch; pine straw or bark should be used where indicated on planting details.
- If wood chips are used as mulch instead of the preferred material make sure that it is clean, and well composted.

CONSTRUCTION NOTES:

- Brick edging to be constructed of reclaimed material.
- Recycled aggregate to be used in patios and walkways constructed from crushed concrete, limestone screenings, or decomposed granite rock. Should be thoroughly compacted during construction
- Patio Space in the north side of the building is to be cut out of the existing material with the outside perimeter of the circular shape removed. Edges should be marked and cut with a concrete saw. Then surface and base can be removed.

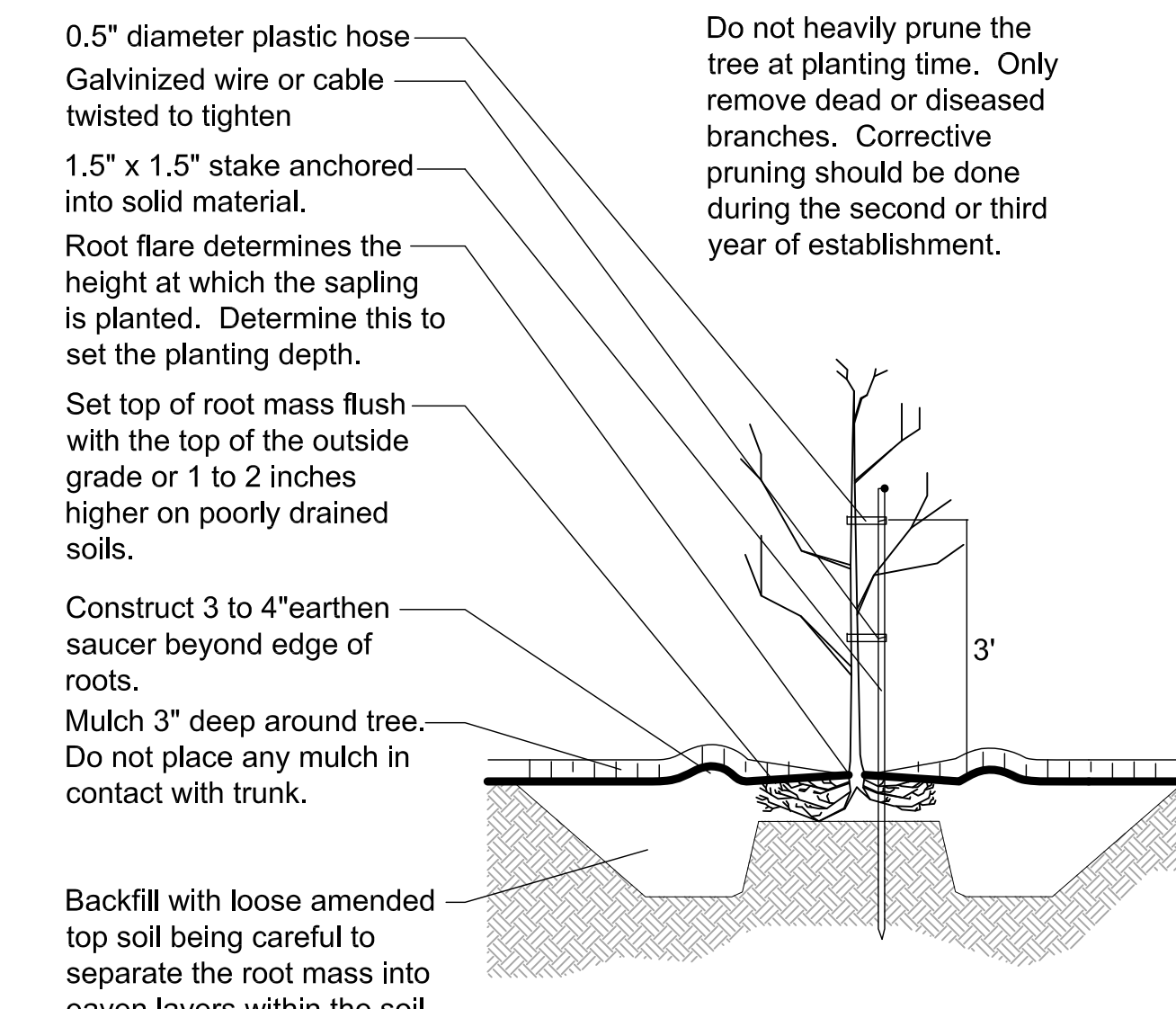
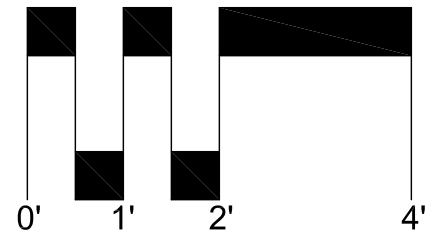


Do not heavily prune the tree at planting time. Only remove dead or diseased branches. Corrective pruning should be done during the second or third year of establishment.



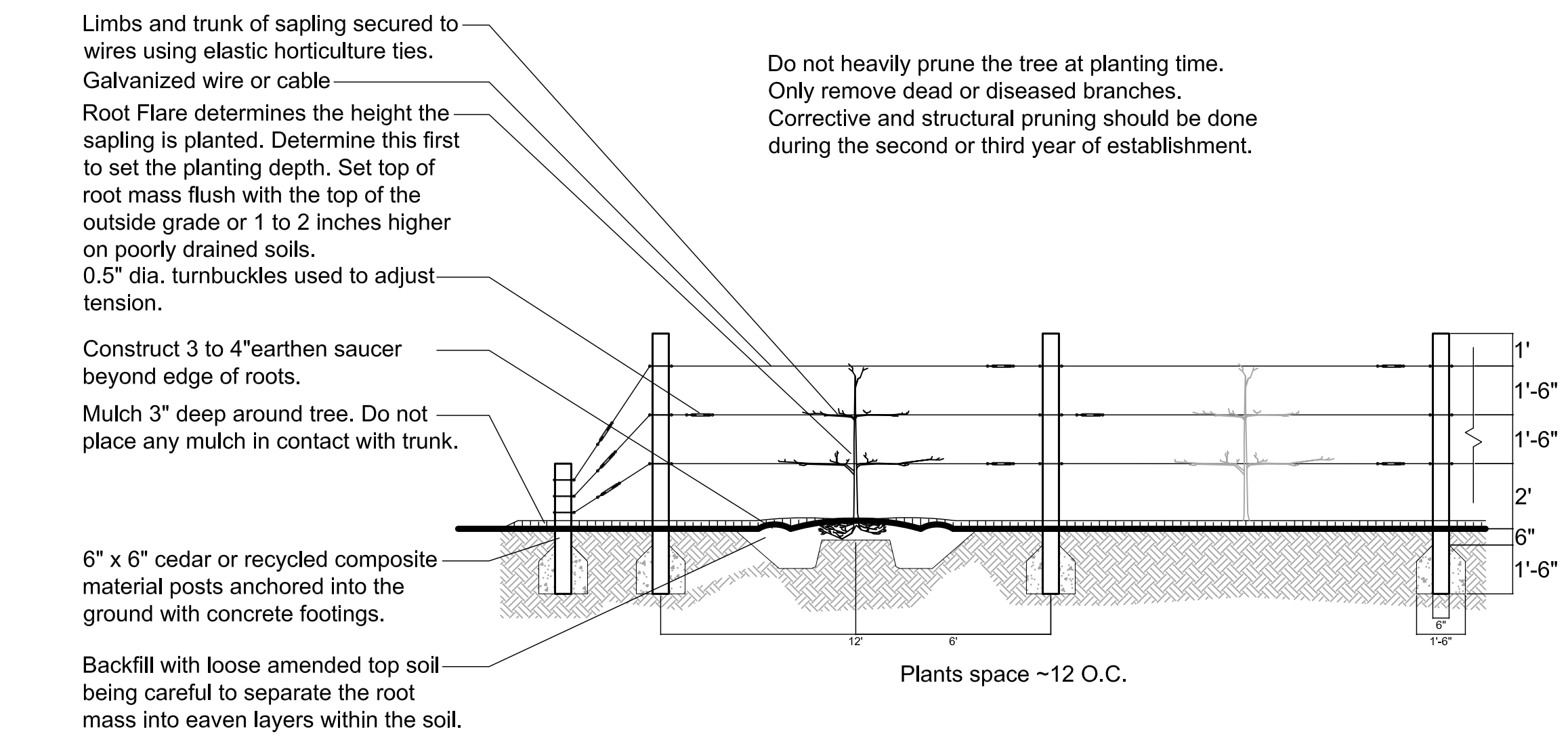
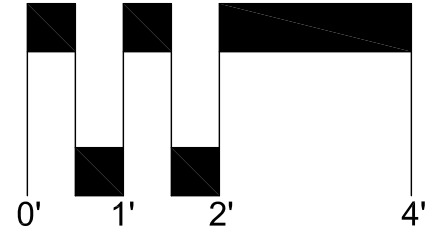
Notes:
Excavate hole 3 times the width of the root ball. Excavate a few inches deeper than the height of the root ball leaving a soil pedestal of unexcavated firm material to rest the root ball on. Backfill with existing soil. Do not amend. Loosen compacted soils outside root ball with a pitchfork after backfilled. Two stakes are preferred for staking tree, although 3 may be used in particularly windy areas. Stake one in a southwesterly direction of the tree trunk.

66 Typical Tree Planting Detail 4.1 Trees Less Than 3"

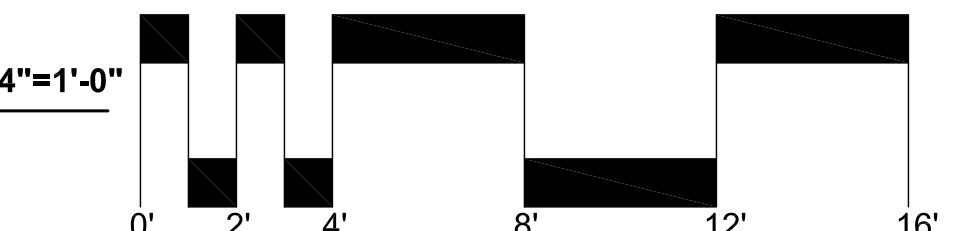


Notes:
Excavate hole 4 times the width of the root mass. Excavate to the height of the root ball leaving a soil pedestal of unexcavated firm material to rest the root mass on. Loosen or excavate the soil around the pedestal 12" deep. Loosen compacted soils outside root ball with a pitchfork after backfilled. A single stake may be used for securing the tree during and after planting. 2 may be used in particularly windy areas. Stake in a southwesterly direction of the tree trunk.

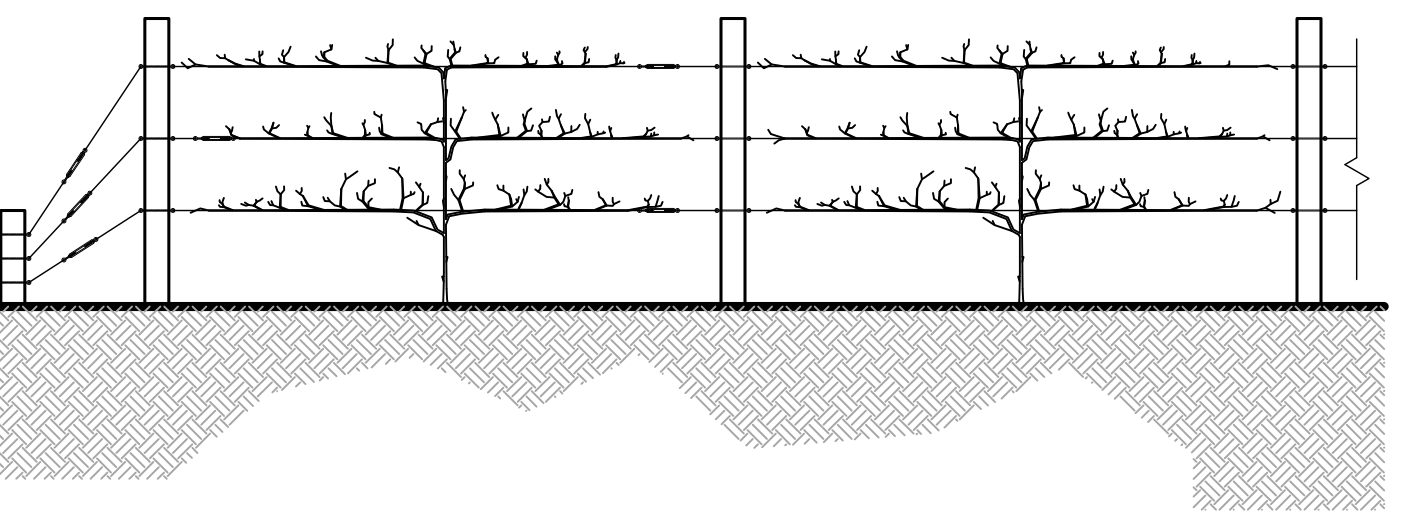
L2 Typical Bareroot Planting 4.2 Detail For Fruit Trees



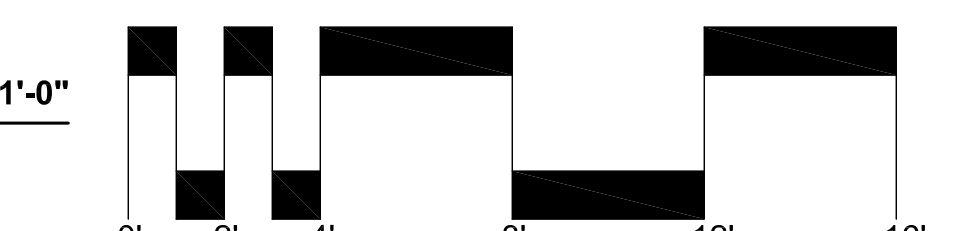
L2 Typical Planting / Construction 2.1 Detail For Espaliered Fruit Trees



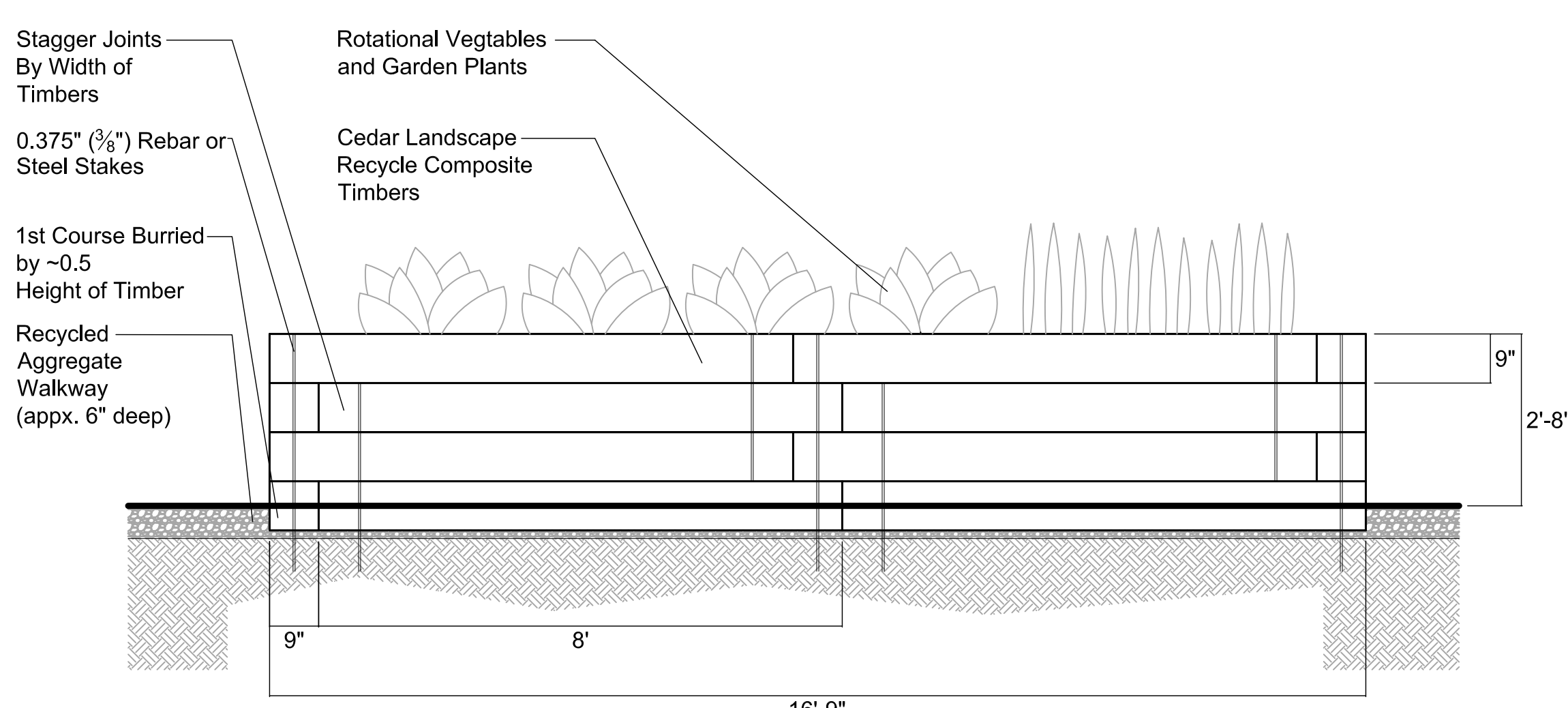
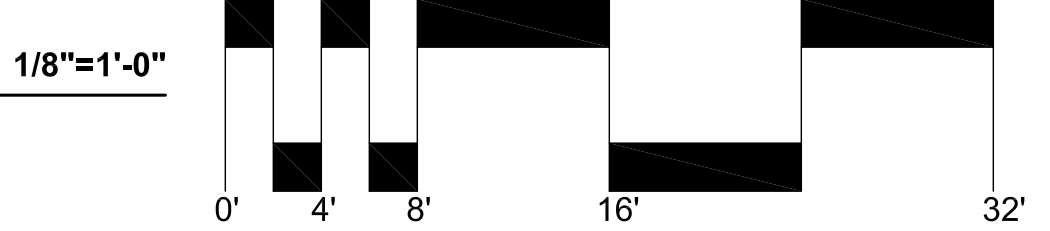
Notes:
Corrective and structural pruning should begin during the second and third years of establishment. Branches are loosely secured to the wire and trained to grow horizontally using elastic horticulture ties. Wire tension is adjusted as needed through turnbuckle device. Mulch and compost is added as needed maintaining a depth of 3".



L2 Typical Maintenance 2.2 Detail For Espaliered Fruit Trees

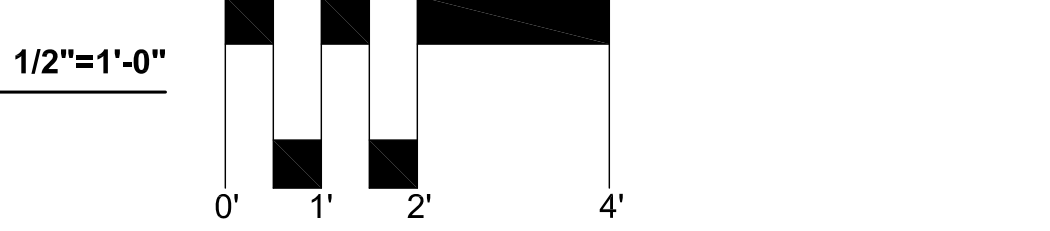


L2 Detail of Northern 1.2 Perennial Beds

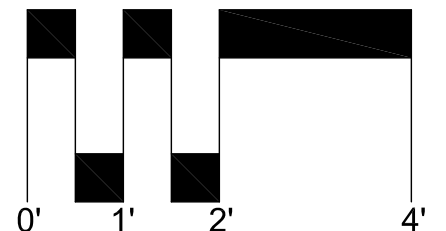


Notes:
Height and width of all the structures may vary depending on location and location in landscape. Clusters of raised beds should share a common top of wall elevation for consistency and a uniform look. Standard timber lengths are 8'-0" minimizing the amount of cuts that will need to be made during construction.

L2 Typical Construction Detail 3.1 of Raised Garden Beds



L2 Typical Tree Planting Detail 4.3 Trees Less Than 3"



University of Illinois
LA 452
Planting Design
E.S.L.A.R.P.

Prepared For:
Eagle's Nest
Transitional
Center for
Veterans

Prepared By:
Michael Garrett

Issued:	No.	Date	Description
	1	12.12.2008	Final Plans

**EAGLE'S NEST
LANDSCAPE
LAYOUT PLAN**

SHEET L-2