

GENERAL PLANTING NOTES:

FOLLOW PLANTING INSTRUCTIONS PROVIDED WITH THIS PACKAGE. ANY QUESTIONS CAN BE DIRECTED TO OUR OFFICE.

CHECK TO BE SURE THE ROOT BALL IS COMPLETELY IN TACT BEFORE TAKING PLANTS OUT OF THEIR CONTAINERS.

WHEN APPLYING MULCH BE SURE NOT TO BURY OR PARTIALLY COVER PLANTS.

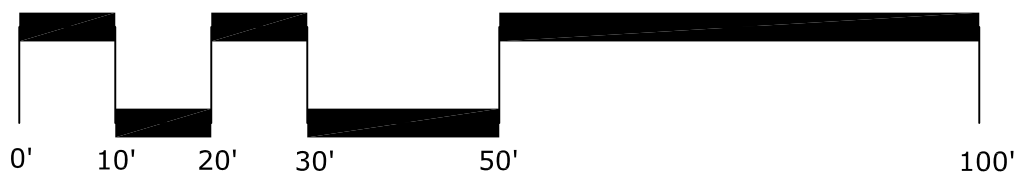
ALL PLANTS SHOULD BE WATERED IMMEDIATELY AFTER PLANTING.

CLEMATIS SHOULD BE PLANTED 10" FROM THE BASE OF THE TRELLIS, HYDRANGEA 18" FROM BASE.

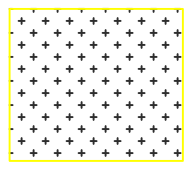
MAINTAIN EXISTING GRADE AT THE BASE OF ALL EXISTING TREES TO REMAIN, OUT TO THEIR DRIPLINE. PROTECT FROM PHYSICAL DAMAGE AND AVOID ACTIVITIES WITHIN DRIPLINE THAT COULD CAUSE DAMAGE SUCH AS DRIVING VEHICLES OR PILING CONSTRUCTION MATERIALS.

CONTRACTOR TO CONSTRUCT ALL CURVILINEAR ELEMENTS WITH SMOOTH, CONTINUOUS, UNBROKEN CURVES.

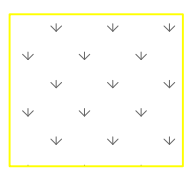
BULBS SHOULD BE PLANTED AT APPROPRIATE DEPTHS, WHEN PERENNIAL PLANTING IS SCHEDULED. THROW OUT ANY BULBS THAT FEELS SOFT OR LOOK MOLDY.



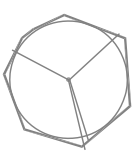
Legend/Materials List



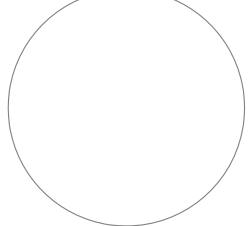
GROUND COVERS



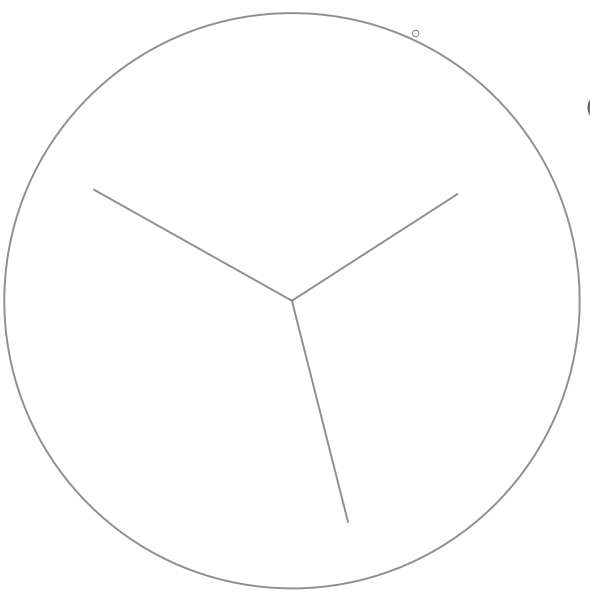
TURF GRASS



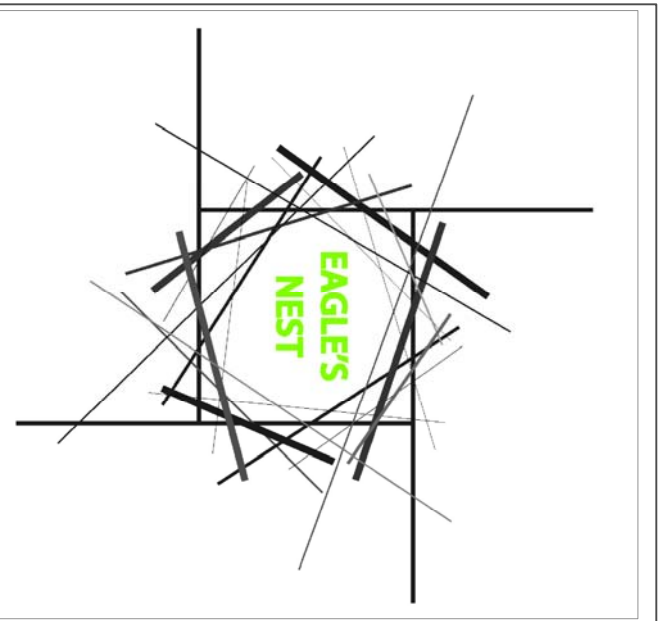
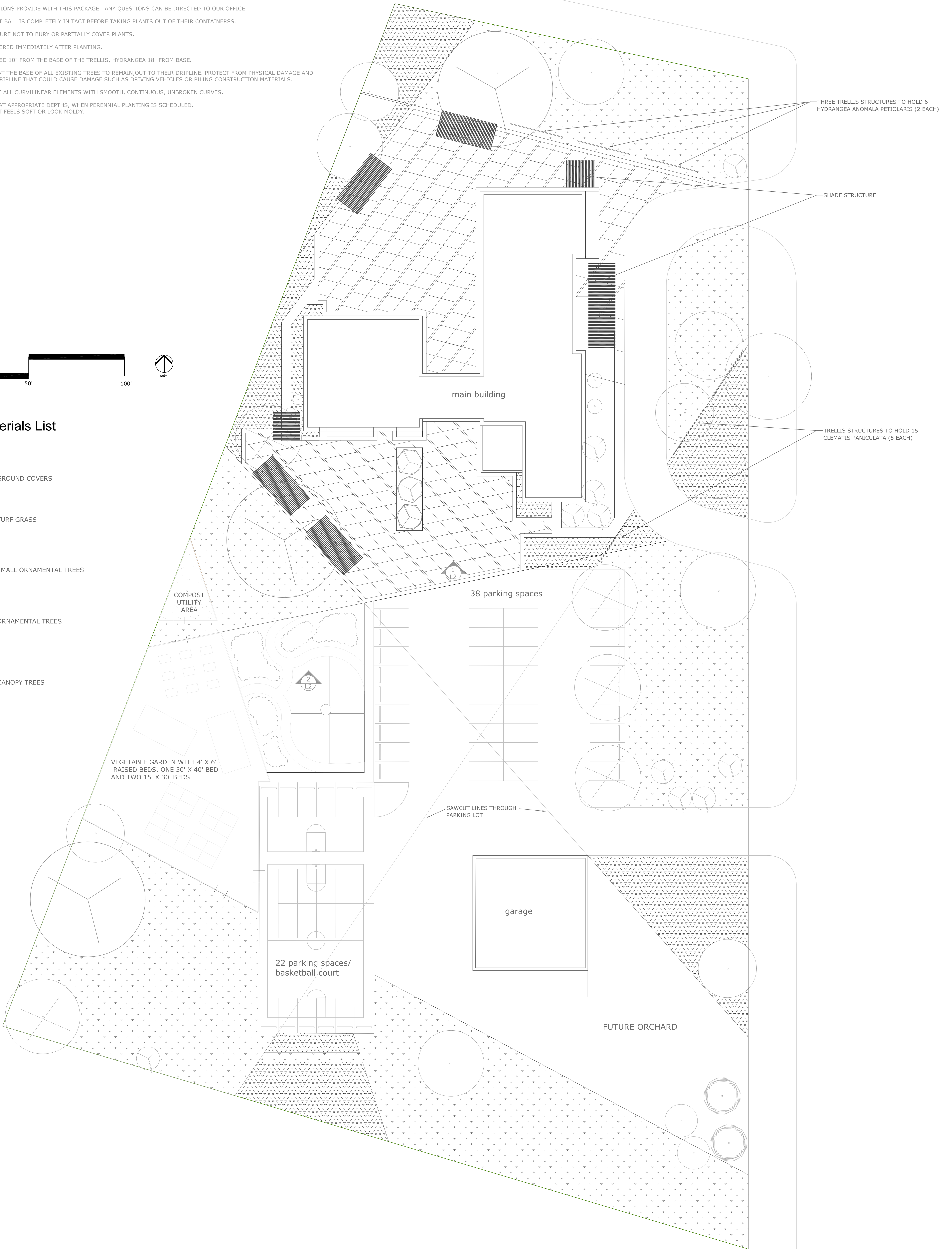
SMALL ORNAMENTAL TREES



ORNAMENTAL TREES



CANOPY TREES

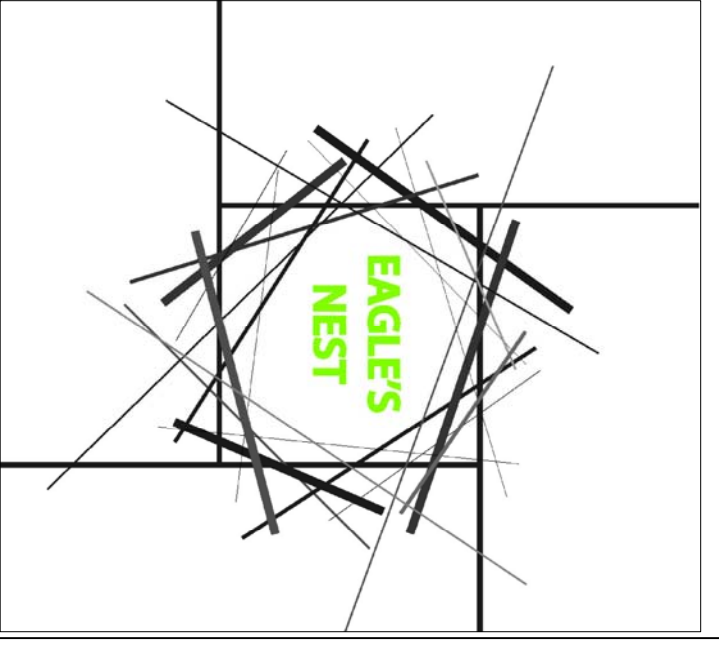


Project Title:
The Eagles Nest,
East St. Louis

Drawing Title:
Final Plan
Ann Merritt

Project Two
Plants in Design
Fall 2008
Jim Urban
Gale Fulton

Project No.
Drawn By:
Checked By:
Approved By:
Date:
Scale:

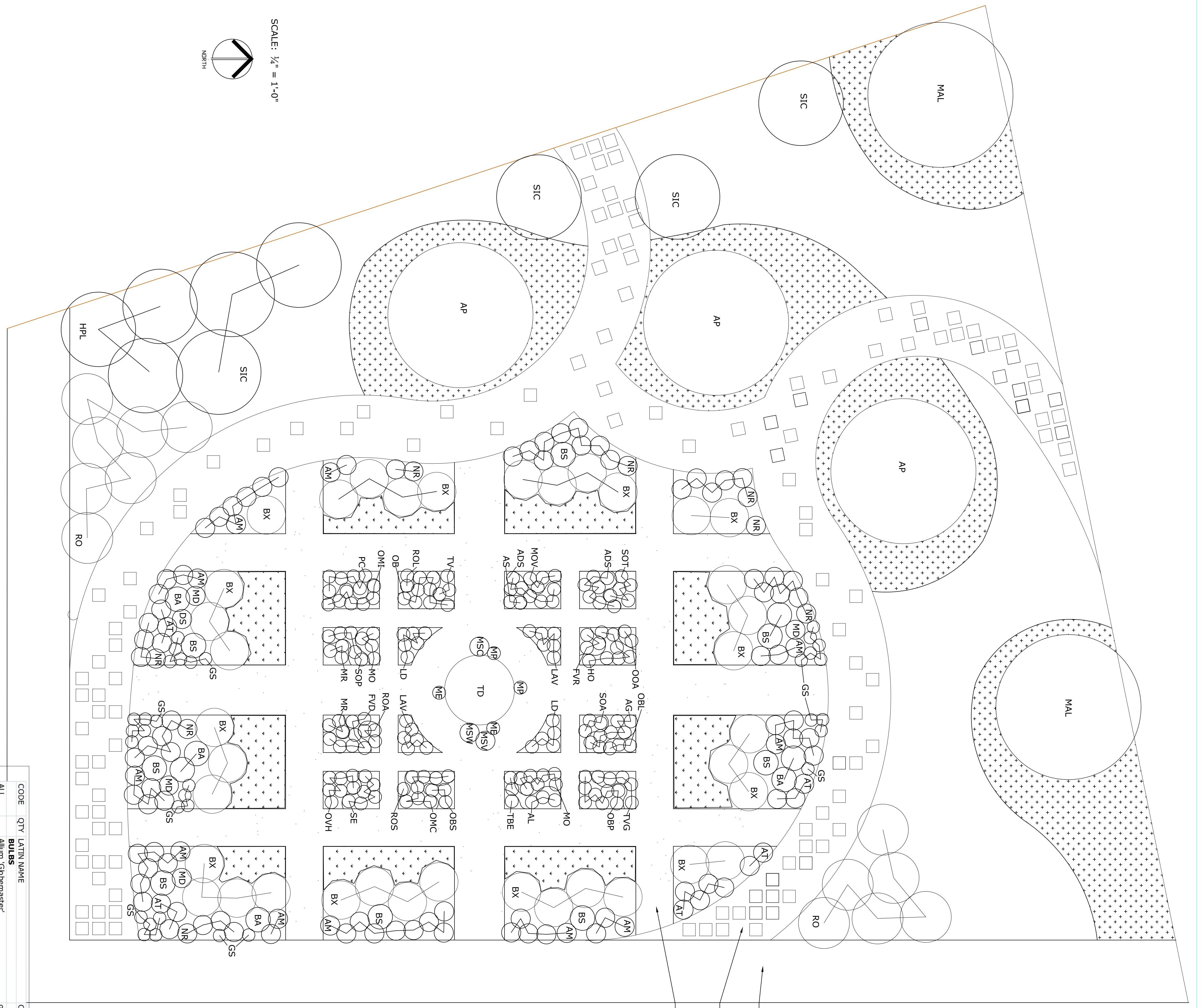
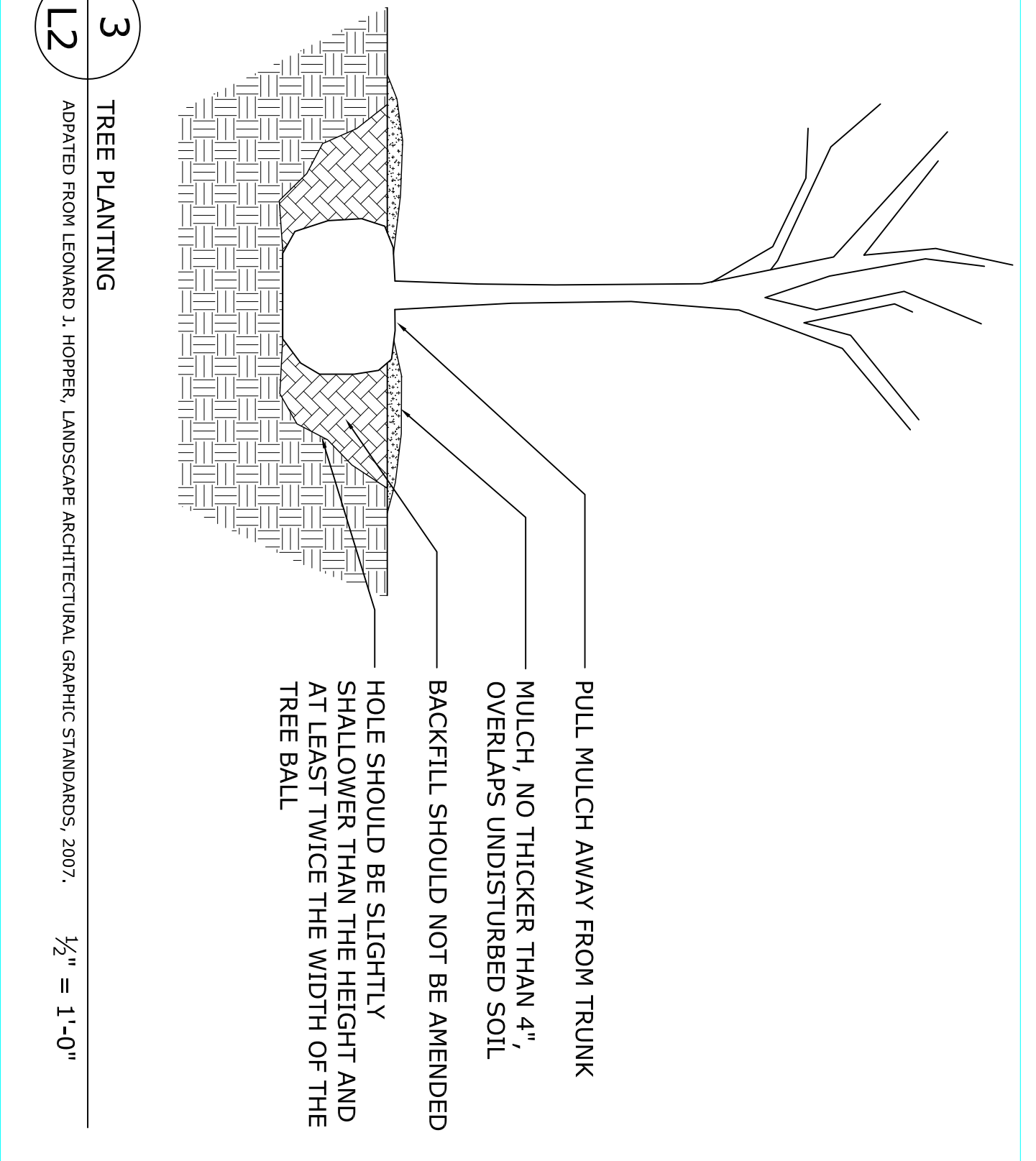
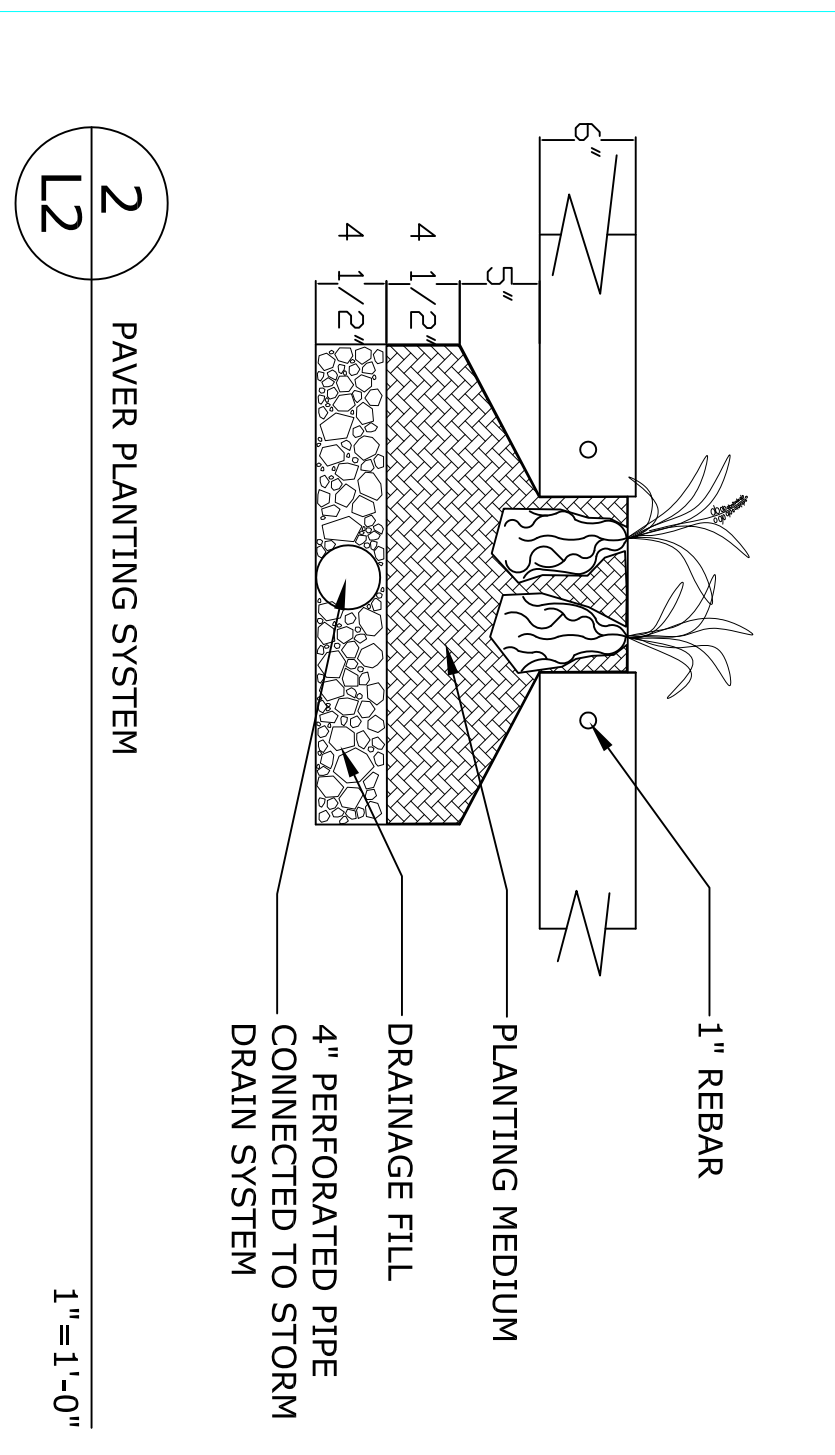


Project Title:
The Eagle's Nest,
East St. Louis

Drawing Title:
Final Plan
Ann Merritt

Project Two
Plants in Design
Fall 2008
Jim Urban
Gale Fulton

Project No.
Drawn By:
Checked By:
Approved By:
Date:
Scale:



CODE	QTY	LATIN NAME	COMMON NAME	SIZE	COMMENTS
ALL		BULBS <i>Allium 'Gibbemaster'</i>	gibbemaster-allium		
GNV		<i>Galanthus nivalis</i>	snow drops		
MAVF		<i>Narcissus armeniacum 'Vaeire Fines'</i>	grape hyacinth		
NHVN		<i>Narcissus 'Hyacinth Hood'</i>	hyacinth hood daffodil		
NHVN		<i>Narcissus 'Pulska'</i>	hyacinth hood daffodil		
SC1		<i>Scilla sibirica</i>	siberian squill		
AS	2	HERBS <i>Allium schoenoprasum</i>	chives	qt.	culinary
AGS	3	<i>Allium tuberosum</i>	gentle chives	qt.	culinary
AGS	7	<i>Aureolum graveolens 'Sativa'</i>	fermier dillagon	qt.	culinary
PUR	3	<i>Foeniculum 'Rubrum'</i>	horroze fennel	qt.	culinary
PVD	7	<i>Foeniculum vulgare 'Douce'</i>	sweet fennel	qt.	culinary
HO	7	<i>Hyssopus officinalis</i>	common blue hyssop	qt.	culinary
LD	11	<i>Lavandula dentata candidans</i>	French lavender	qt.	fragrance
LAV	3	<i>Neritara rectata</i>	Munstead lavender	qt.	culinary
NRK	3	<i>Neritara rectata</i>	german chamomile	qt.	culinary
NRK	3	<i>Neritara rectata</i>	german chamomile	qt.	culinary
NV	4	<i>Neritara officinalis 'Variegata'</i>	variegated lemon balm	qt.	culinary
NSV	3	<i>Mentha suaveolens 'Variegata'</i>	pineapple mint	qt.	culinary
MSC	3	<i>Mentha spicata 'Crispa'</i>	curly mint	qt.	culinary
MSW	3	<i>Mentha spicata 'Wrigley's'</i>	Wrigley's mint	qt.	culinary
MP	2	<i>Mentha x piperita</i>	peppermint	qt.	culinary

NE	2	<i>Mentha spicata</i>	spearmint	qt.	culinary
OB	8	<i>Ocimum basilicum 'Tatso-Lalor'</i>	sweet basil	qt.	culinary
OBP	8	<i>Ocimum basilicum 'Purpurescens'</i>	purple basil	qt.	culinary
OBS	3	<i>Ocimum basilicum 'Siam Queen'</i>	Siam queen basil	qt.	culinary
OMC	8	<i>Organum x majoricum 'Culinar'</i>	culinary oregano	qt.	culinary
OMH	7	<i>Organum x majoricum 'Zitellari'</i>	Italian oregano	qt.	culinary
ODL	2	<i>Organum onites 'Aureum'</i>	golden oregano	qt.	culinary
ON	2	<i>Organum onites 'Aureum'</i>	golden oregano	qt.	culinary
PC	6	<i>Retrostium cissium</i>	parsley	qt.	culinary
ROA	3	<i>Rosmarinus officinalis 'Jap'</i>	big blue rosemary	qt.	culinary
ROL	2	<i>Rosmarinus officinalis 'Luge Blue'</i>	large blue rosemary	qt.	culinary
ROS	1	<i>Rosmarinus officinalis 'Sissinghurst Blue'</i>	Sissinghurst blue rosemary	qt.	culinary
RO5	9	<i>Salvia edulis 'Amal'</i>	prehepits sage	qt.	culinary
SOA	5	<i>Salvia officinalis 'Purpureascens'</i>	purple sage	qt.	culinary
SOT	5	<i>Salvia officinalis 'Ticolor'</i>	variegated sage	qt.	culinary
TV	3	<i>Thymus vulgaris</i>	common thyme	qt.	culinary
TBE	1	<i>Thymus 'Broad-leaf English'</i>	English thyme	qt.	culinary
TVG	5	<i>Thymus vulgaris 'German Winter'</i>	German winter thyme	qt.	culinary
AM		GROUNDCOVERS <i>Achemilla mollis</i>	lady's mantle	1 gal.	
AA		<i>Arenum aestivifolius</i>	dwarf goatsbeard	1 gal.	
AC		<i>Astrum canadense</i>	common ginger	1 gal.	
LBB		<i>Linum muscatif 'Big Blue'</i>	sweet woodruff	1 gal.	
PVN	6	ORNAMENTAL GRASSES <i>Miscanthus sinensis 'Gracillimus'</i>	maiden grass	3 gal.	
		<i>Panicum virgatum 'Nordwand'</i>	switch grass	3 gal.	
ACG		PERENNIALS <i>Achillea x Convolston Gold'</i>	yarrow	1 gal.	
AM		<i>Achemilla mollis</i>	lady's mantle	1 gal.	
AHJ		<i>Asterone x hybrida 'Honoree Jobert'</i>	Japanese asterone	1 gal.	
ASD		<i>Asclepias tuberosa 'Milk and Honey'</i>	butterfly weed	1 gal.	
AFN		<i>Asclepias tuberosa 'Milk and Honey'</i>	butterfly weed	1 gal.	
AAV		<i>Asclepi x arenalis 'Bridal Veil'</i>	asclipe	1 gal.	
ACV		<i>Asclepi chinensis 'Vivone'</i>	asclipe	1 gal.	
ASS		<i>Asclepi simplicifolia 'Sprite'</i>	asclipe	1 gal.	
BA		<i>Baptisia australis 'Sproubark'</i>	false blue indigo	3 gal.	
BAF		<i>Baptisia australis 'Sproubark'</i>	false blue indigo	3 gal.	
BAJF		<i>Bursera macrophylla 'Jack Frost'</i>	gumbo limbo	1 gal.	
CP		<i>Campylosiphon plumbyrnoides</i>	serbian yellowflower	1 gal.	
CER		<i>Ceratostigma plumbyrnoides</i>	plumbago	1 gal.	
CR		<i>Cimicifuga racemosa</i>	snake root	1 gal.	
DS		<i>Dierca spectabilis</i>	breeding heart	1 gal.	
EPH		<i>Echinacea purpurea 'Magnus'</i>	Magnus coneflower	1 gal.	
EHG		<i>Equatorium maculatum 'Gateway'</i>	Gateway Joe Pye weed	1 gal.	
GM		<i>Geranium macrorrhizum 'Bevan's Variety'</i>	Bevan's biroot geranium	1 gal.	
GS		<i>Geranium sanguineum 'Max Frei'</i>	Max Frei biroot geranium	1 gal.	
MD		<i>Geranium doryan 'Napberry Wine'</i>	Raspberry Wine Joe Pye	1 gal.	
MS		<i>Neopeta subcaerulea 'Walker's Low'</i>	blue-purple	1 gal.	
NS		<i>Neopeta subcaerulea 'Walker's Low'</i>	blue-purple	1 gal.	
PSB		<i>Perovskia atropurpurea 'Fibiger'</i>	Sarah Bernhard	1 gal.	
PAF		<i>Perovskia atropurpurea 'Fibiger'</i>	lavender blue	1 gal.	
PSM		<i>Pulmonaria saccharata 'Mrs. Moon'</i>	Mrs. Moon lungwort	1 gal.	
AP	3	SHRUBS <i>Asclepias parviflora</i>	butterbrush buckeye	5 gal.	
BGM	37	<i>Buxus x Green Mountain'</i>	Green Mountain boxwood	5 gal.	
CC		<i>Caryopteris x clandonensis</i>	bluebeard	3 gal.	
HV		<i>Hammamelis venalis 'Umbralis'</i>	vernal witchhazel	5 gal.	
HD		<i>Hydrangea paniculata 'Snoozy Queen'</i>	Grand Rapids hydrangea	3 gal.	
SIC	6	<i>Staphanandra incisa 'Crispa'</i>	cultured stephanandra	2 gal.	
SCH		<i>Symphoricarpos x chenaultii 'Hancock'</i>	cranberry	2 gal.	
RO	13	<i>Rubus odoratus</i>	cranberry	3 gal.	
TD	1	<i>Rubus densiflorus</i>	yew	3 gal.	
GD	2	TREES <i>Gymnocladia dioica</i>	kentucky coffee tree	bb	
PP	2	<i>Hammamelis virginiana</i>	common witchhazel	5 gal.	
PP	2	<i>Parrotia persica</i>	persian parrotia	bb	
VP	2	<i>Viburnum plicatum tomentosum 'Sharsai'</i>	sargent crab	5 gal.	
VPT	2	<i>Viburnum plicatum tomentosum 'Sharsai'</i>	doublefile viburnum	5 gal.	
CP	15	VINES <i>Hydrangea anomala pedicels</i>	sweet autumn clematis	1 gal.	
HAP		<i>Hydrangea anomala pedicels</i>	climbing hydrangea	3 gal.	