

# Miller/Darrow Design Group

611 Laredo Taft Dr.  
Champaign, IL 61820

Project:

## Eagle's Nest Transitional Housing Facility

East St. Louis, IL.

Prepared For:

## Eagle's Nest

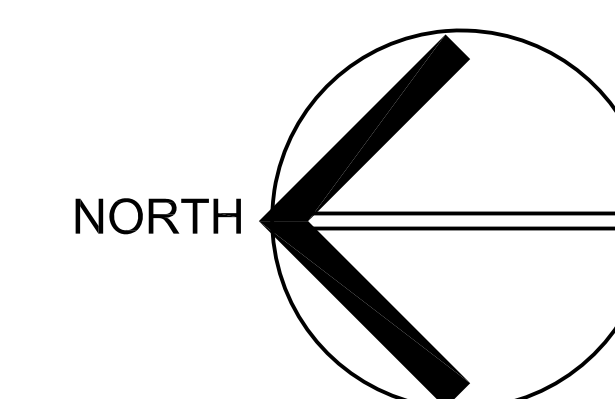
Ckd: Issued: 12.16/08

Revisions:

No:	Date:	Description:

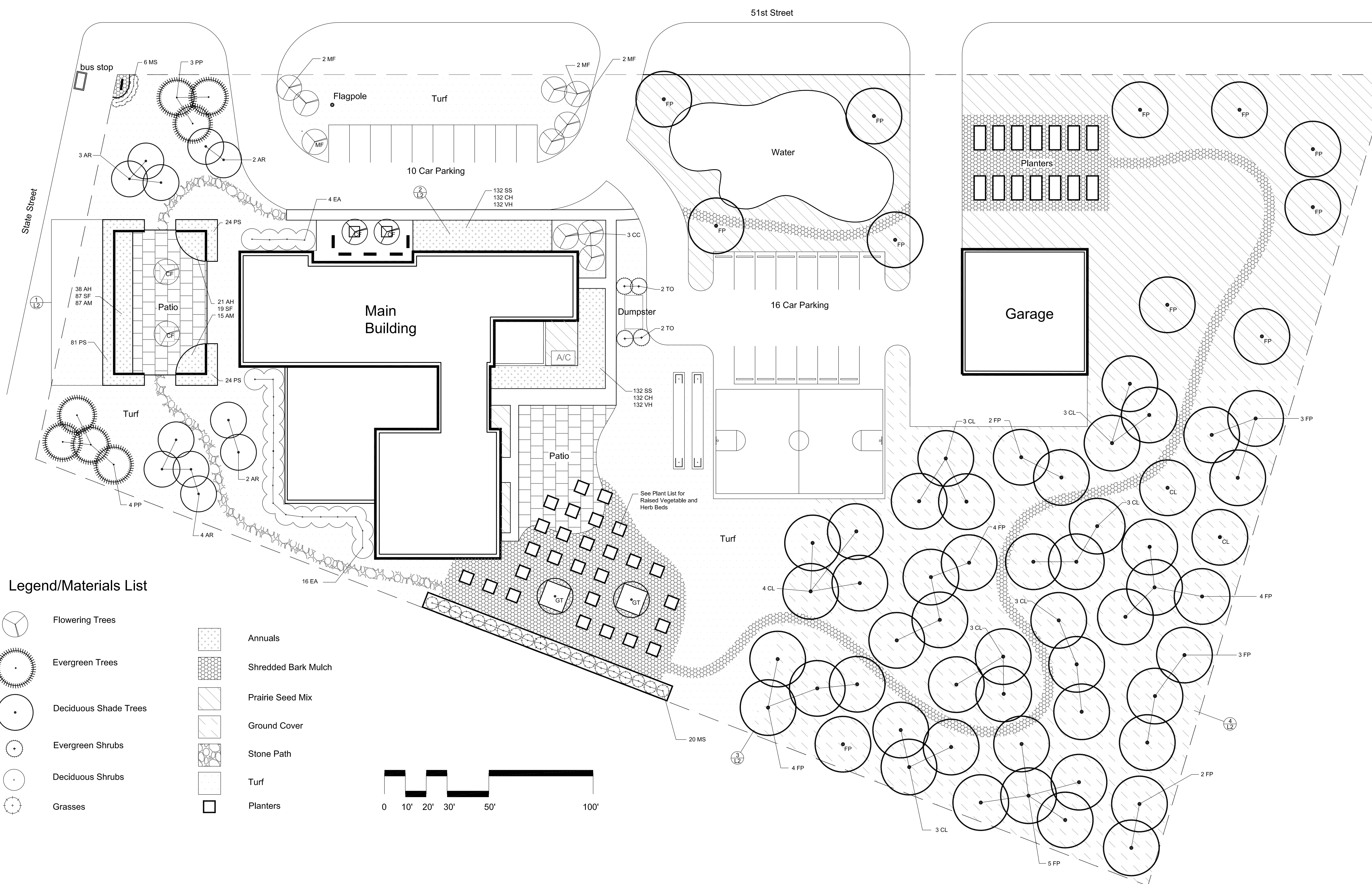
## Planting Plan

Scale: 1"=20'



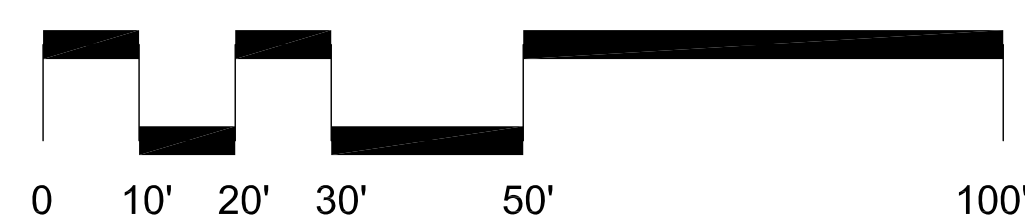
Sheet:

**L1** of 2



### Legend/Materials List

- |  |                       |  |                     |
|--|-----------------------|--|---------------------|
|  | Flowering Trees       |  | Annuals             |
|  | Evergreen Trees       |  | Shredded Bark Mulch |
|  | Deciduous Shade Trees |  | Prairie Seed Mix    |
|  | Evergreen Shrubs      |  | Ground Cover        |
|  | Deciduous Shrubs      |  | Stone Path          |
|  | Grasses               |  | Turf                |
|  |                       |  | Planters            |



# Miller/Darrow Design Group

611 Laredo Taft Dr.  
Champaign, IL 61820

Project:

## Eagle's Nest Transitional Housing Facility

East St. Louis, IL.

Prepared For:

## Eagle's Nest

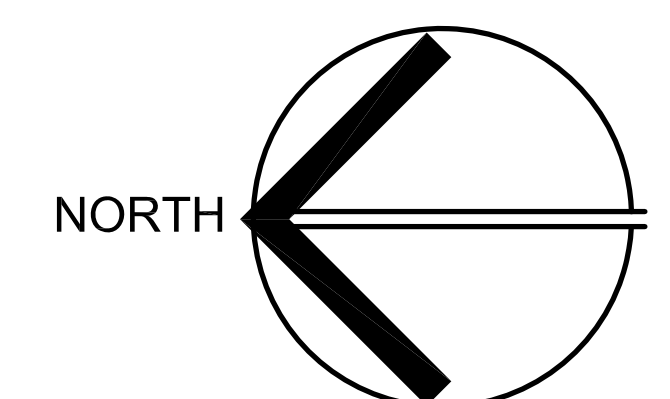
Ckd: Issued: 12.16/08

Revisions:

No:	Date:	Description:

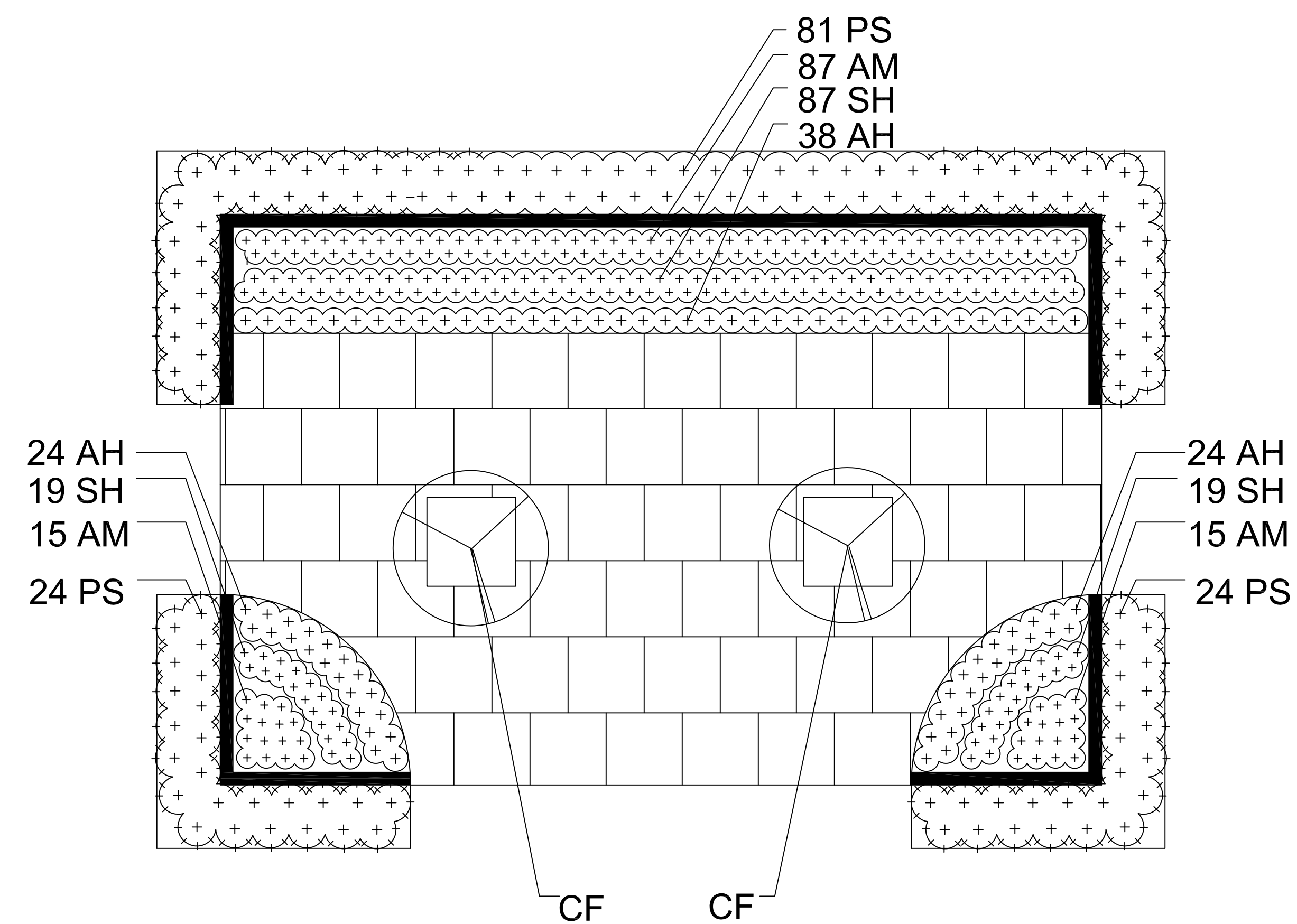
## Planting Details

Scale: 1"=20'

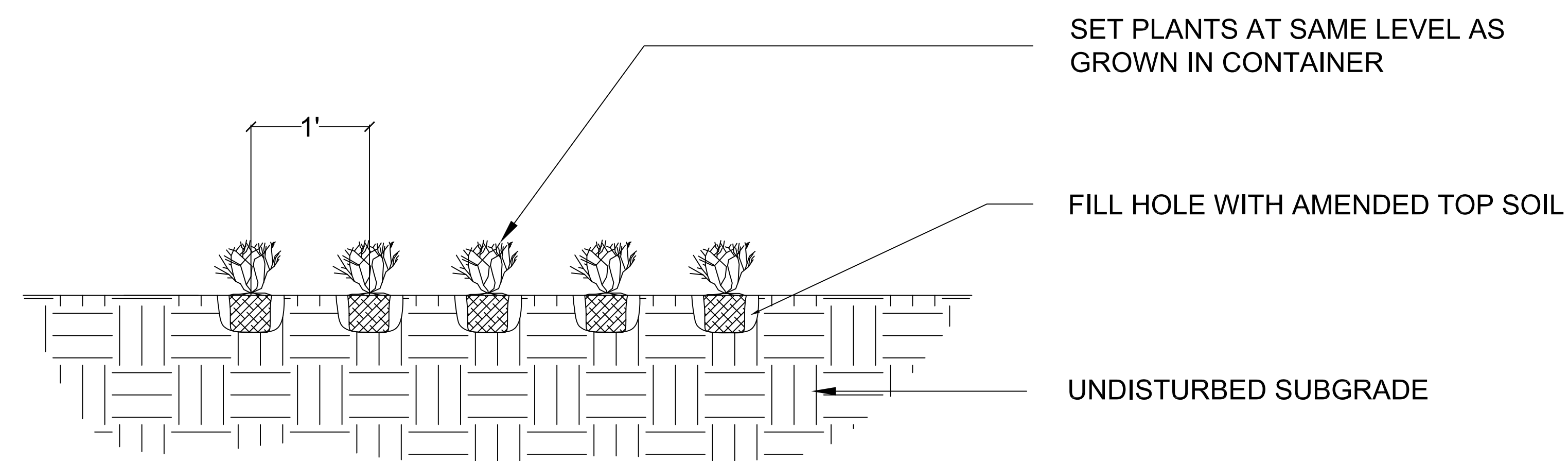


Sheet:

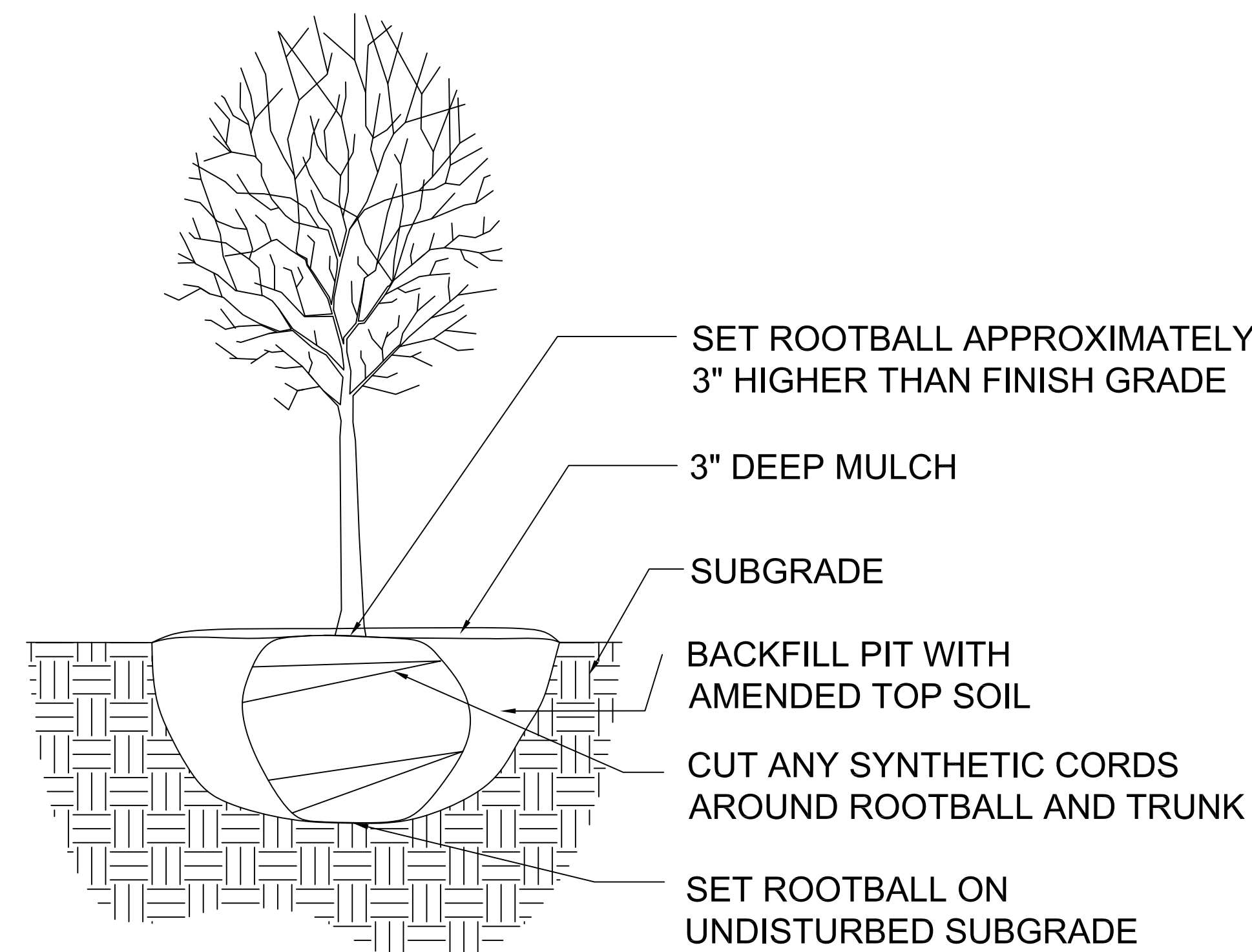
L2 of 2



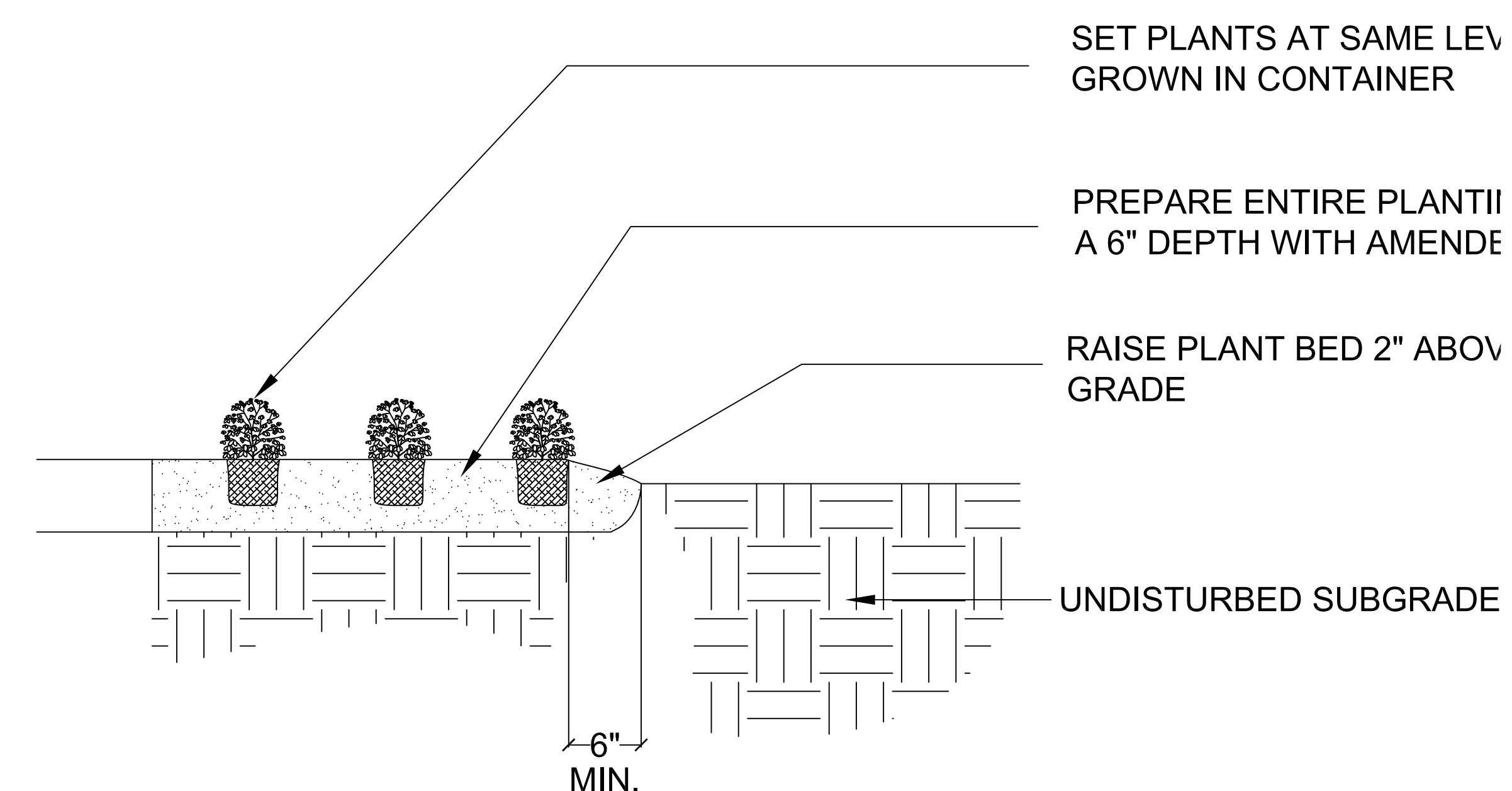
**1** Planting Detail  
Scale: 1/8"=1'



**2** Annual Detail  
Not to scale



**3** Tree Detail  
Not to scale



**4** Groundcover Detail  
Not to scale

### Notes:

1. After initial installation contractor will water the plant materials once and then leave the plants care to the caretaker of the site
2. Tree mulch rings to be approximately 5.5 inches in diameter in lawn
3. Contractor is responsible for erosion in all seeded mix areas
4. Contractor shall verify all grades, dimensions, and existing conditions and report any discrepancies to Landscape Architect
5. Contractor shall locate and verify all existing and newly installed underground utilities prior to any lawn work or tree and shrub planting and shall immediately report any conflicts to Landscape Architect
6. Caretaker should inspect plant material for acceptance prior to planting
7. English Ivy is a fast growing ground cover, spacing and quantity for the ground cover in the southwest corner of the site is dependant on funds and the desired layering effect of client. Recommended spacing per plant is 6"o.c.
8. Prairie seed mix used throughout the site is sold by the pound and includes the plants listed in the plant list. Amount sown in particular areas depends on desired plant density and effect of the client.
9. Planter area in southeast corner is intended for growing any desired plants in planter boxes by housing residents or others affiliated with the site.
10. Vegetable and Herb planters are intended for growing such plants as desired by people in the shelter or those in charge of food preparation.

ABBREV.	QNTY.	SCIENTIFIC NAME	COMMON NAME	SIZE
<b>Deciduous Trees</b>				
CL	24	<i>Carya laciniosa</i>	Shellbark Hickory	2" C
GT	2	<i>Gleditsia triacanthos var. inermis</i>	Common Thornless Honey Locust	2" C
FP	38	<i>Fraxinus pennsylvanica</i>	Green Ash	2" C
AR	11	<i>Acer rubrum</i>	Red Maple	2" C
<b>Flowering Trees</b>				
CC	3	<i>Cercis Canadensis</i>	Eastern Redbud	6' BB
MF	7	<i>Malus floribunda</i>	Japanese Flowering Crabapple	2" C
CF	4	<i>Cornus florida</i>	Flowering Dogwood	6' BB
<b>Evergreen Trees</b>				
PP	7	<i>Picea pungens var. glauca</i>	Blue Colorado Spruce	
TO	4	<i>Thuja occidentalis</i>	Eastern Arborvitae	
<b>Shrubs</b>				
EA	20	<i>Euonymus alatus 'Compactus'</i>	Dwarf Burning Bush	30" BB
<b>Annuals</b>				
AH	80	<i>Ageratum houstonianum</i>	Flossflower	1 G (8/flat)
VH	264	<i>Verbena x hybrida 'rubra'</i>	Red Verbena	1 G (8/flat)
CH	264	<i>Calibrachoa hybrid</i>	Yellow Million Bells	1 G (8/flat)
SF	125	<i>Salvia farinacea</i>	Mealycup Sage	1 G (8/flat)
AM	117	<i>Antirrhinum majus</i>	Snapdragon	1 G (8/flat)
SS	264	<i>Solenostemon scutellarioides</i>	Orange Coleus	1 G (8/flat)
<b>Grasses</b>				
PS	129	<i>Pennisetum setaceum 'rubrum'</i>	Purple Fountain Grass	1 G
MS	26	<i>Miscanthus sinensis</i>	Chinese Silvergrass	1 G
<b>Groundcover</b>				
HH		<i>Hedera helix</i>	English Ivy	3" Pots
<b>Prairie Seed Mix</b>				
		Mix is \$10/lb and recommends 8.25 lbs./acre		
		<i>Sporobolus clandestinus</i>	Rough Dropseed	
		<i>Andropogon gerardii</i>	Big Bluestem	
		<i>Sorghastrum nutans</i>	Indiangrass	
		<i>Bouteloua curtipendula</i>	Sideoats Grama	
		<i>Schizachyrium scoparium</i>	Little Bluestem	
		<i>Elymus virginicus</i>	Virginia Wild Rye	
		<i>Elymus canadensis</i>	Canada Wild Rye	
<b>Vegetables</b>				
		Recommended plants. Types and Quantity up to caretaker		
		<i>Capsicum chinense Jacquin</i>	Habenero chili	
		<i>Capsicum annuum</i>	Bell pepper	
		<i>Brassica oleracea</i>	Broccoli	
		<i>Brassica oleracea</i>	Cauliflower	
		<i>Cucumis sativus</i>	Cucumber	
		<i>Daucus carota subsp. Sativus</i>	Carrot	
		<i>Brassica oleracea var. capitata</i>	Cabbage	
<b>Herbs</b>				
		Recommended plants. Types and Quantity up to caretaker		
		<i>Thymus vulgaris</i>	Thyme	
		<i>Anethum graveolens</i>	Dill	
		<i>Allium schoenoprasum</i>	Chives	
		<i>Ocimum basilicum</i>	Basil	
		<i>Rosmarinus officinalis</i>	Rosmary	
		<i>Salvia officinalis</i>	Sage	
		<i>Mentha</i>	Mint	
		<i>Petroselinum crispum</i>	Parsley	
<b>Fruit</b>				
		Recommended plants. Types and Quantity up to caretaker.		
		<i>Solanum lycopersicum</i>	Tomato	