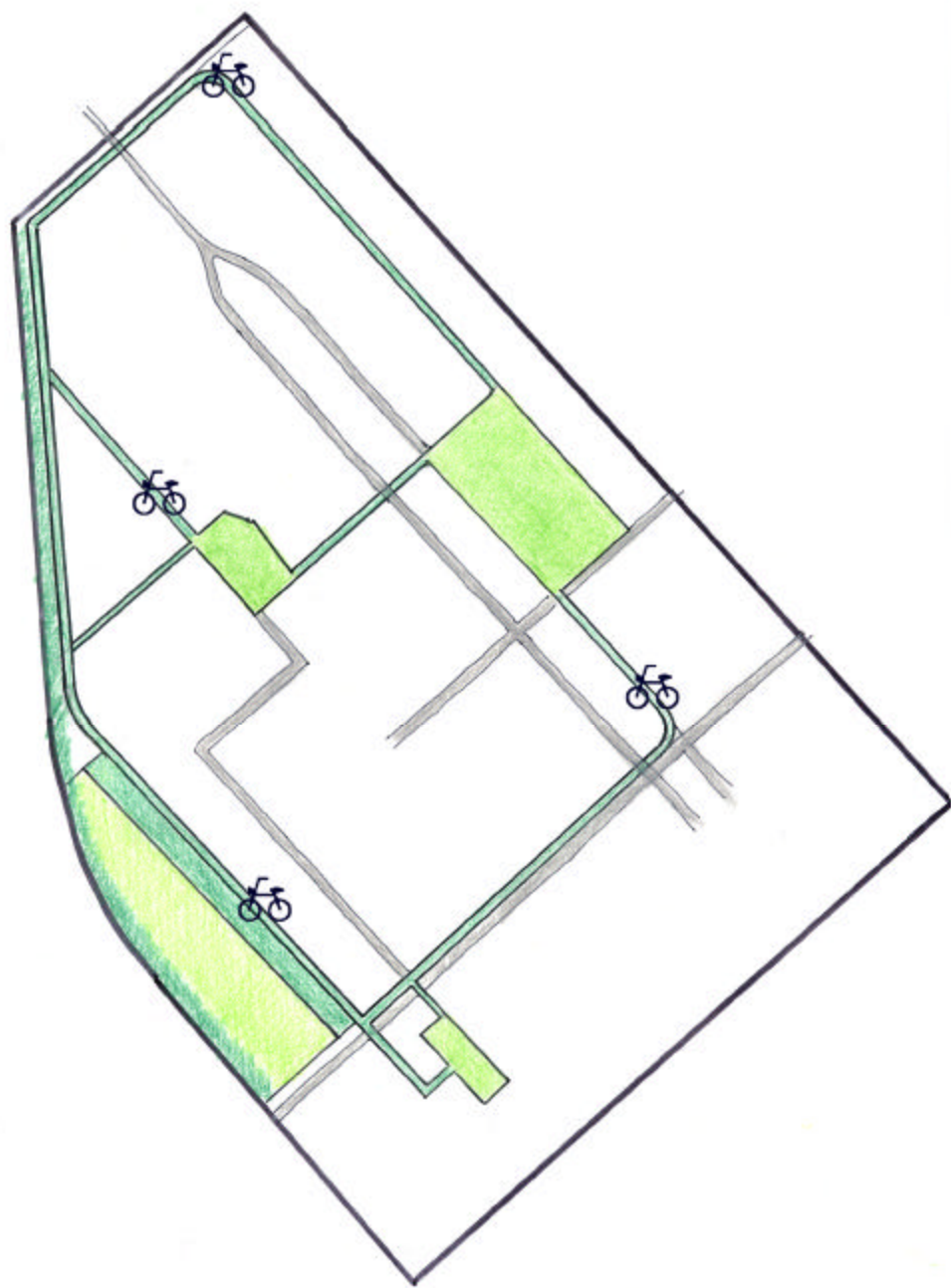


# PEDESTRIAN ORIENTED DEVELOPMENT

## New Urbanism Principles Applied to South End

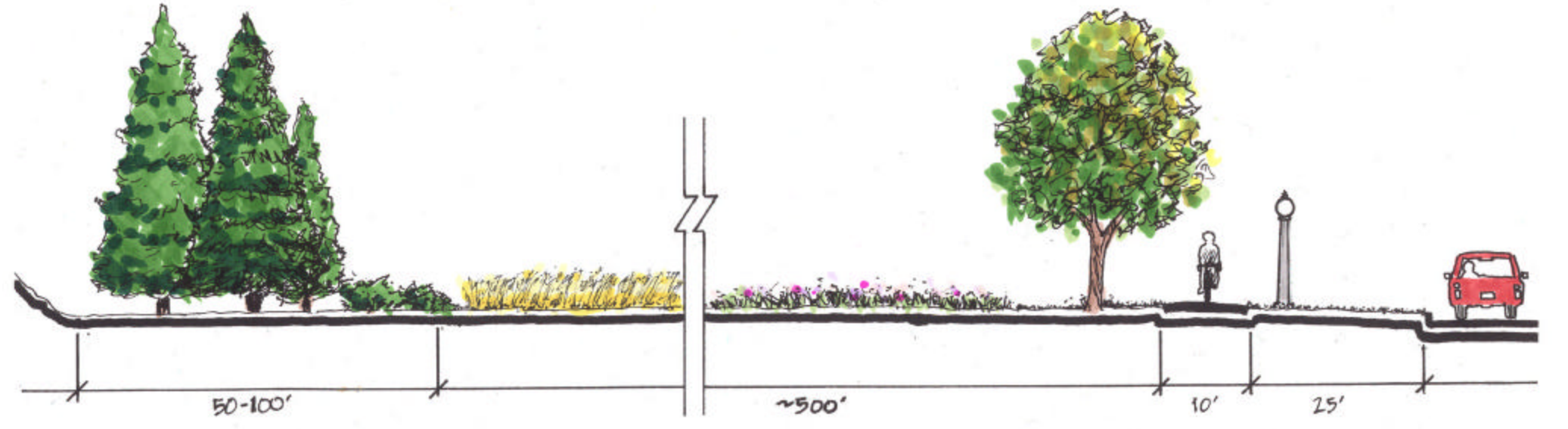
Project by: Paul Fyle, Marjorie Johns, Michelle Kulikowski, & Bruce Phillips

### Parks and Open Space:



The park system pathway and park locations are shown in the diagram to show easy circulation to any part of the neighborhood.

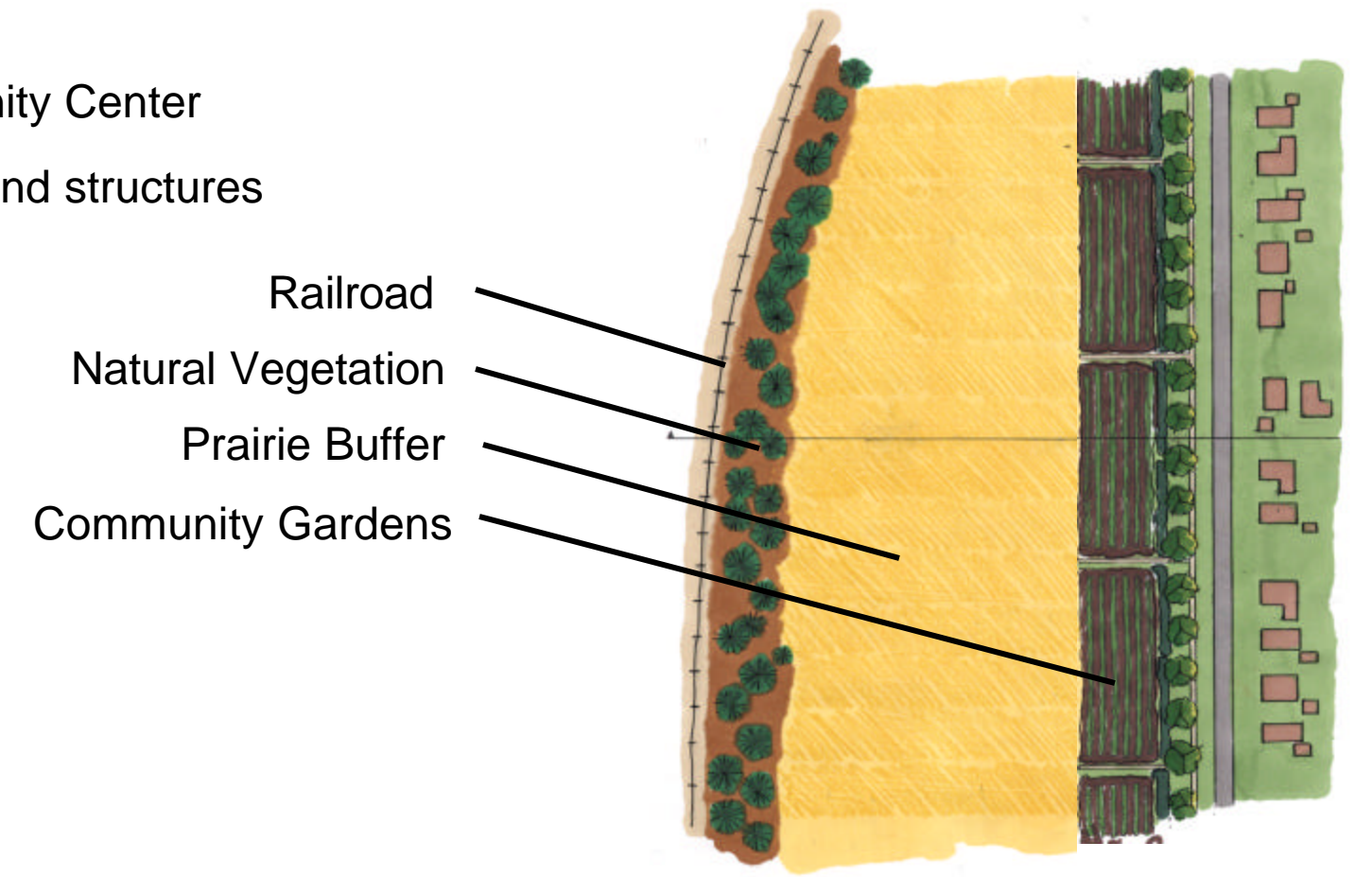
- A vegetative buffer will be created along the southwestern boundary of the neighborhood which will include community gardens and a multi-use recreation trail
- Existing parks will be renovated and/or enlarged to accommodate a variety of needs
- Pedestrian corridors will be developed to connect the parks



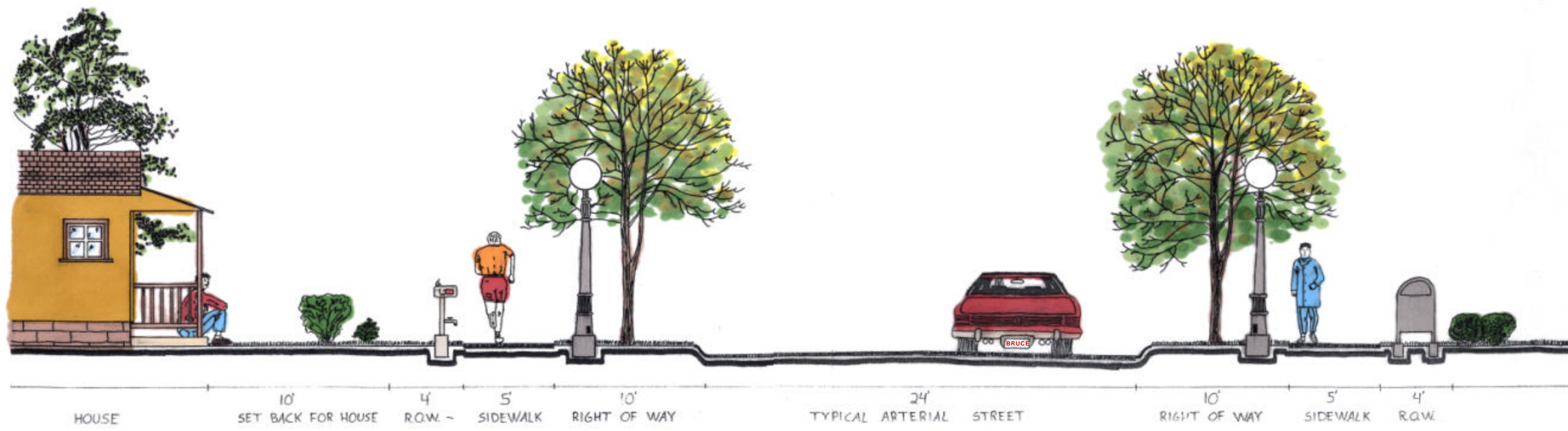
**Vegetative buffer with bike path & community gardens**



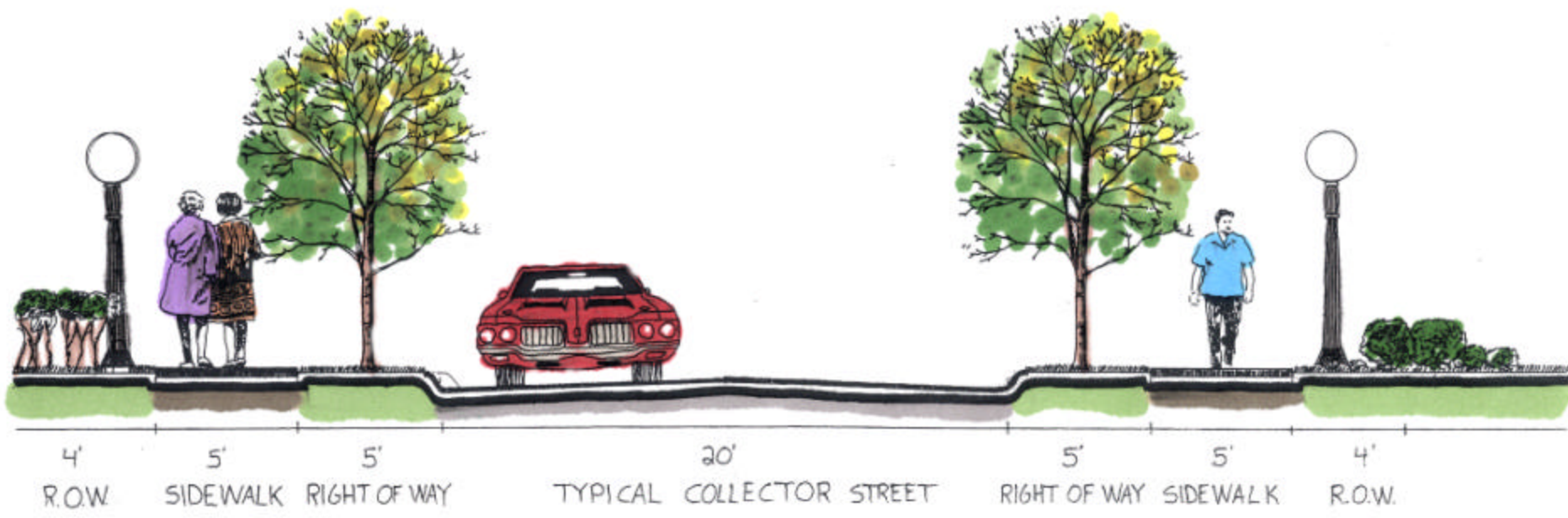
**Park plan**



**Plan of vegetative buffer**



**Section of 19th Street, Typical Streetscape**



**Section of Market Street, Typical Streetscape**

- Streetscape and infrastructure improvements will begin at the neighborhood spark and progress outward
- Infrastructure improvements will address storm water drainage as a priority
- Bus routes will be revised to connect all the sparks

### Streetscape and Infrastructure:

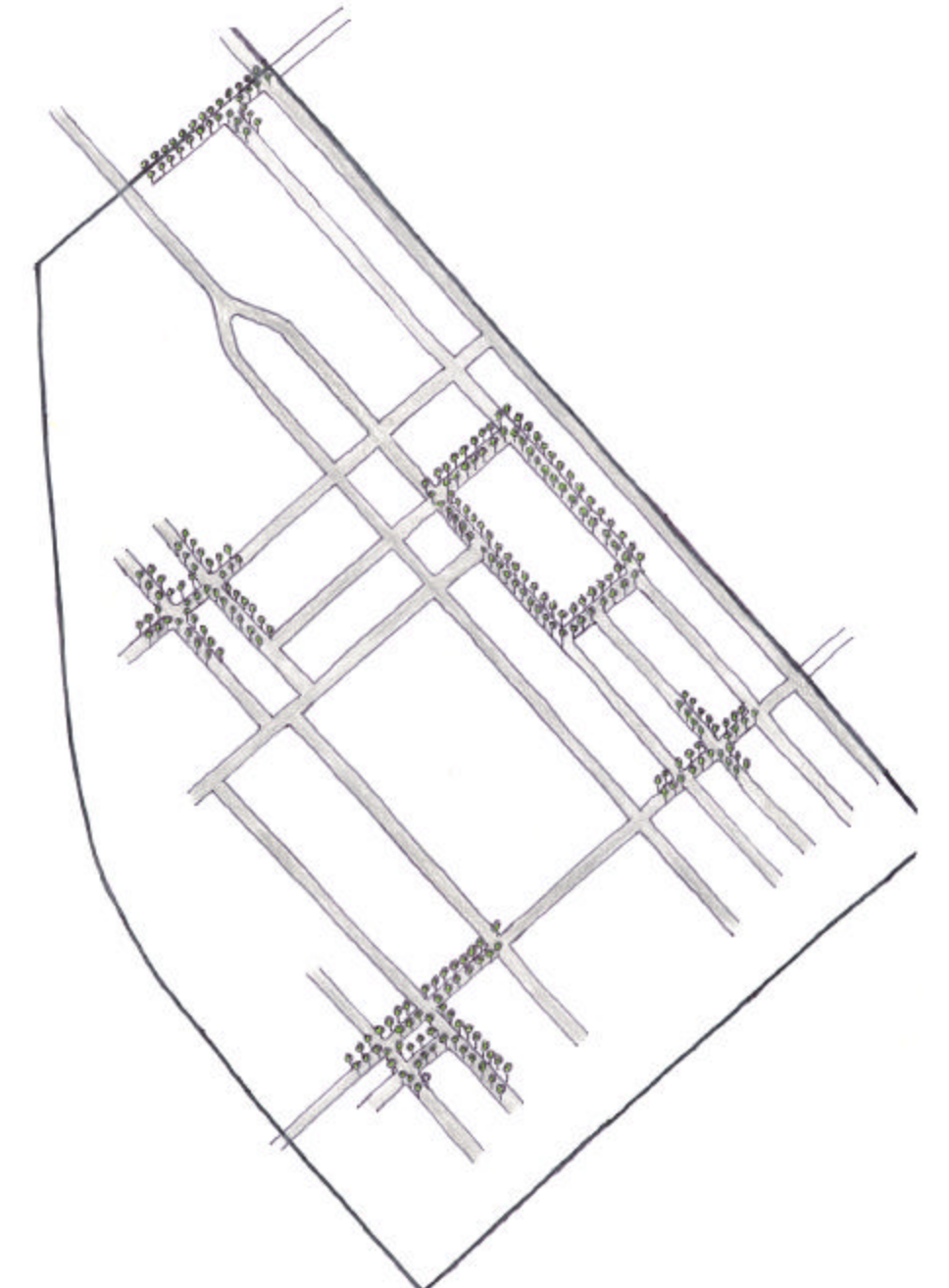
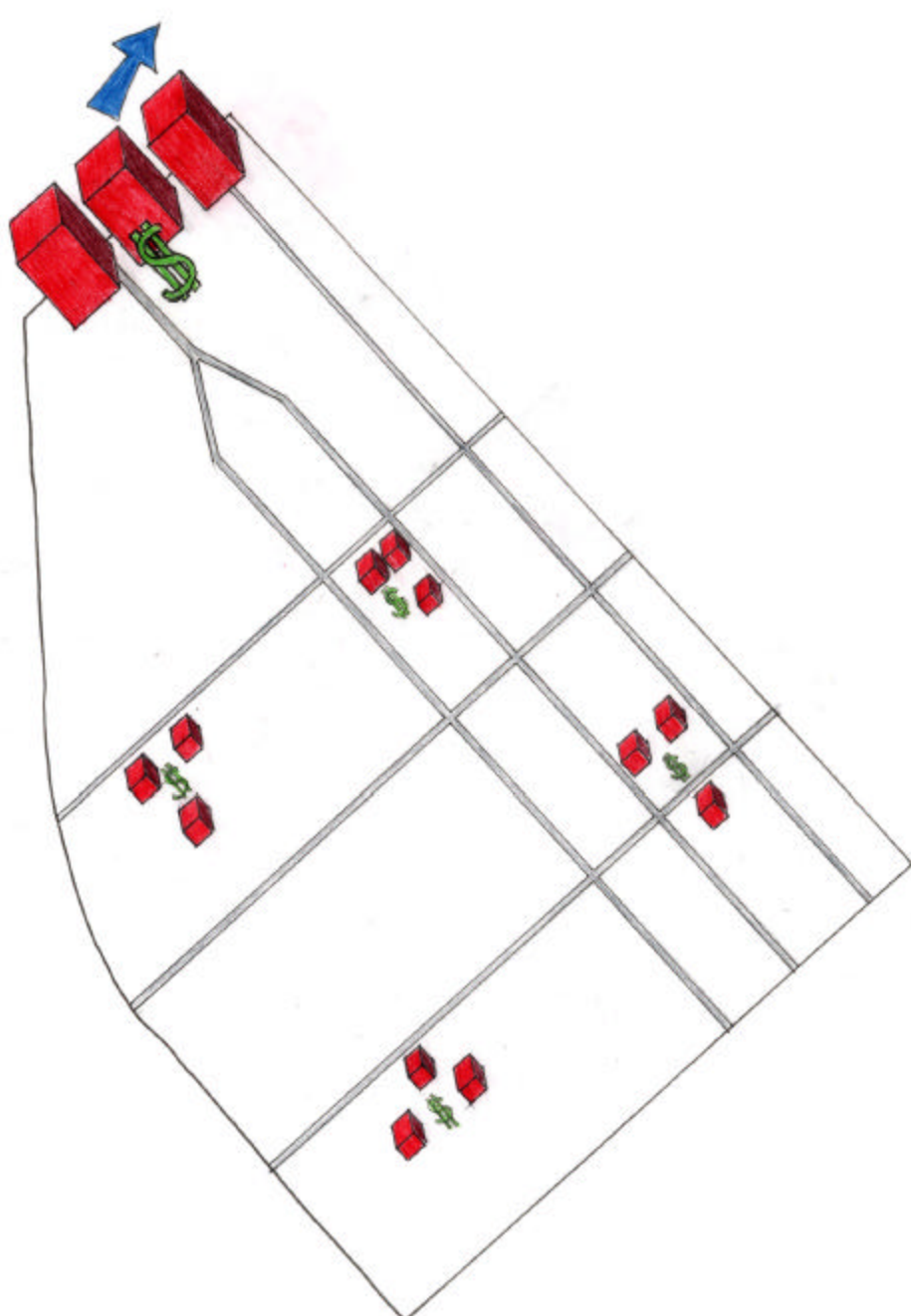


Diagram shows core areas for improving the infrastructure and streetscape.

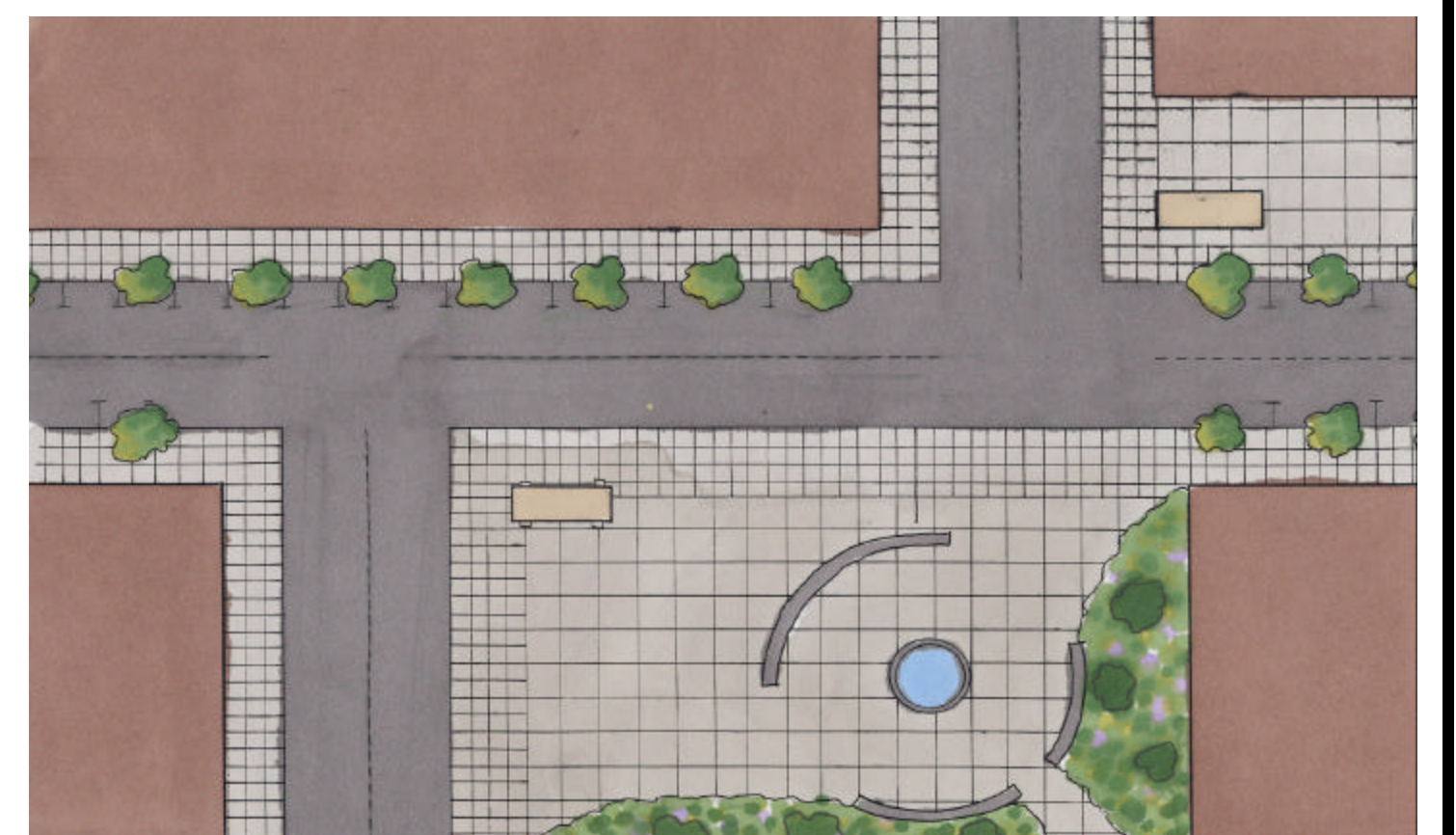
### Commercial and Daily Needs:



The larger buildings symbolize core business area with smaller corner store business dispersed throughout the neighborhood.

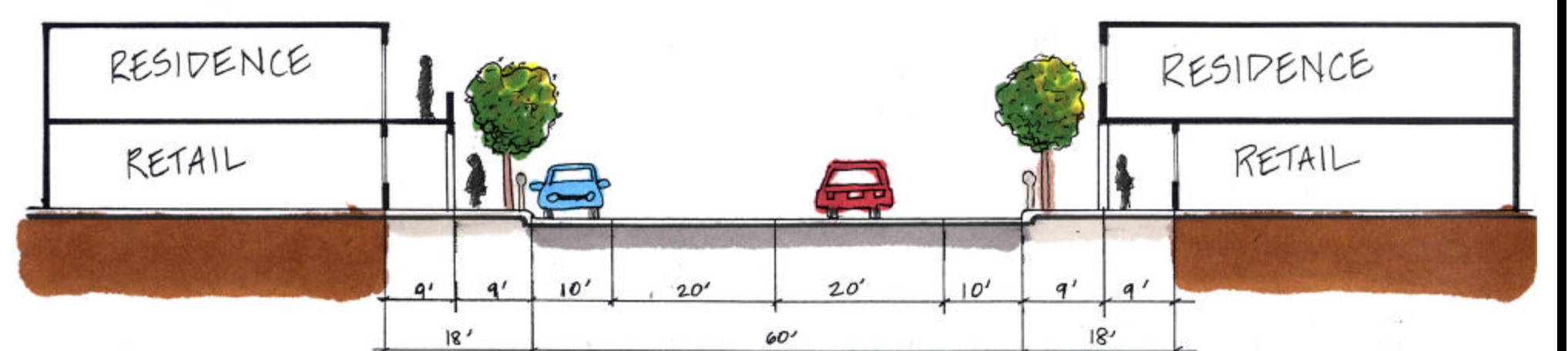


**Perspective view of 10<sup>th</sup> Street**



**Plan of commercial plaza; 10<sup>th</sup> Street**

- Commercial development will be revitalized along 10<sup>th</sup> Street per residents' requests
- Small commercial developments will occur within each spark
- Specific types of development will be based on community needs



**10<sup>th</sup> Street section**